

NowyStyl KUSCH+CO

# Finishes

CATALOGUE



Right now, you're on  
your way to discovering  
a vibrant world of

# colours & textures

Dive in, let your creativity  
run wild and bring your  
stunning visions to life.  
Explore and enjoy!



# index

## fabrics

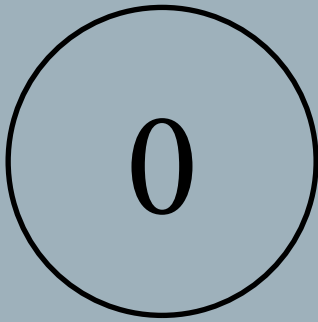
0	Lars	8	4	Main Line Flax	60	
	Imitation leather	10		skai® Parotega	62	
	Basic Fabric	11		Blazer	64	
	Micro	11		Blazer Lite	68	
1	Era	14	Synergy	69		
	Bondai	17	24/7 Flax	73		
	Lucia	18	Hi-Tech	73		
	Oban	19	Focus Royal	74		
	Oflum	20	5	Remix 3	78	
Sempre/Sempre Melange	21	Fine Leather		83		
2	Cura	24		6	Nappa Leather	86
	Rivet	26			Arona Leather	87
	Xtreme	27				
	Valencia	30				
	Hush	35				
3	Urban	35				
	Boogie	36				
	Home	37				
	Silvertex	40				
	Step/Step Melange	44				
Split Leather	52					
Runner	53					
Rhythm	54					
Harlequin	54					
Moulin-FR	56					
Chili	57					

## other

Compact Laminate	117	Leather	93
Edge for table tops	116	Linoleum	117
Elasto-net	93	Melamine	108
Enamels	102	Metal	94
Felt	93	Mesh	90
Fenix NTM®	118	Melamine for Organic Board	114
Glass	120	Plastic	98
Glued edge 3 mm	113	Polyurethane	103
Lacquered MDF	107	Veneer for chairs	104
Laminate	111	Veneer for furniture	106
Laminate for chairs	104	Wood	105
Laminate for table tops	112		
Laser edge ABS	113		

Technical specifications	123
Legend	156





price group



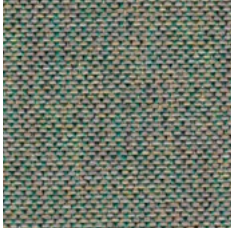
LAR45



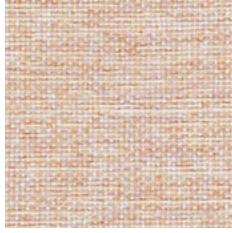
LAR59



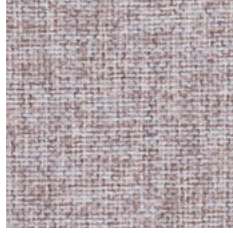
LAR79



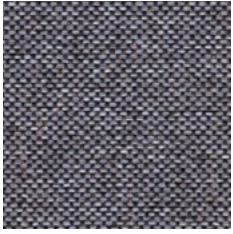
LAR35



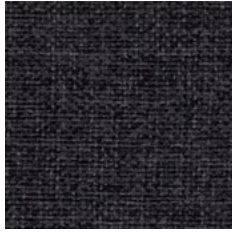
LAR07



LAR82



LAR98



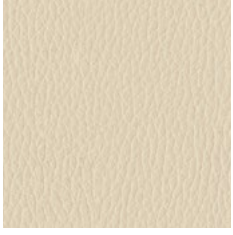
LAR97



LAR101



# V | Imitation leather



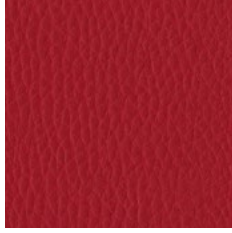
V18N



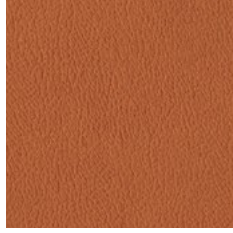
V46



V83



V79N



V49



V16N



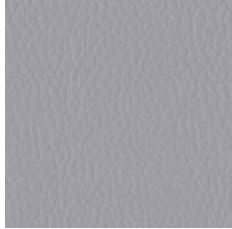
V53N



V82



V01



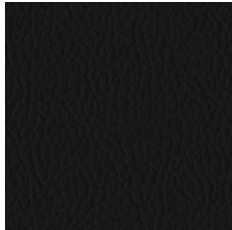
V28



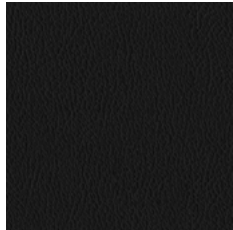
V02N



V62

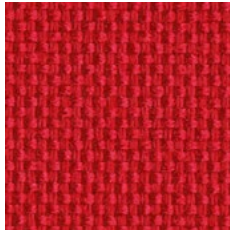


V04

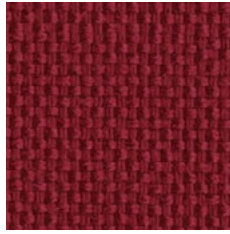


V14N

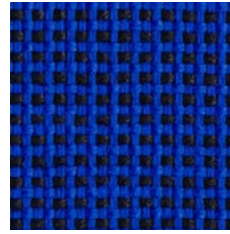
# C | Basic Fabric



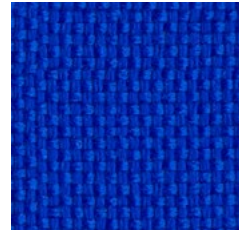
C2



C29



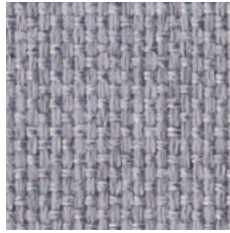
C14



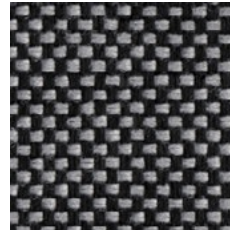
C6



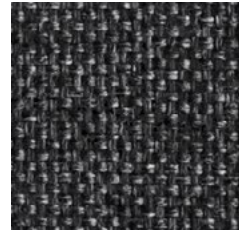
C11



C12



C73



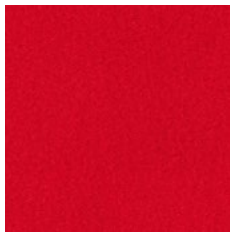
C38

SPECIFICATION



easy to  
disinfect

# M | Micro



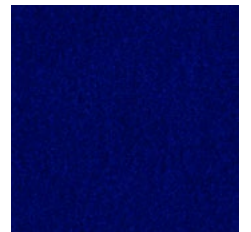
M04



M31



M62



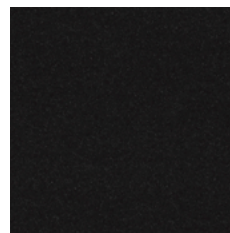
M28



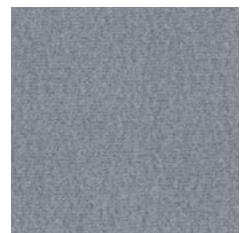
M38



M07



M43



M47



cigarette  
& match



confirmed  
safety

SPECIFICATION

GO TO INDEX

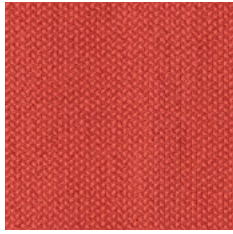




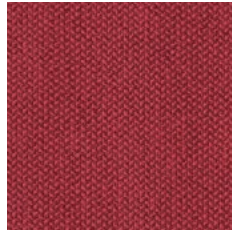
price group

# CSE | Era

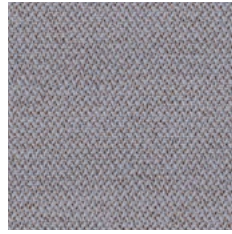
by Camira



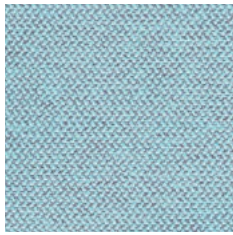
CSE29



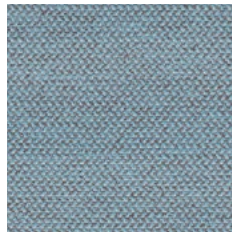
CSE28



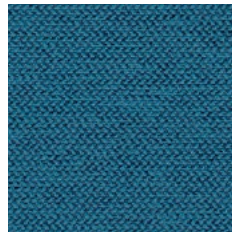
CSE11



CSE39



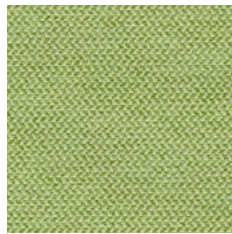
CSE43



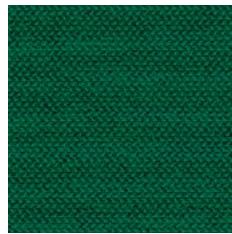
CSE42



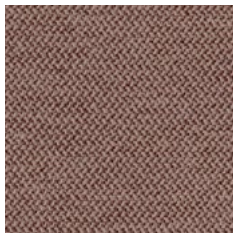
CSE33



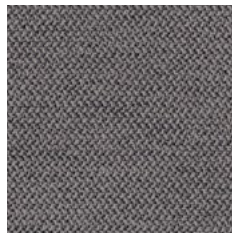
CSE34



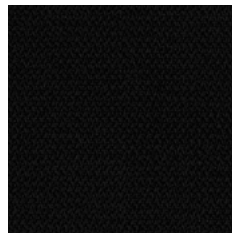
CSE35



CSE02



CSE13



CSE14



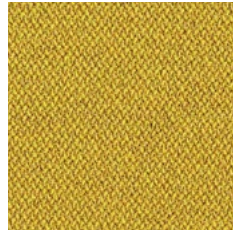
CSE30



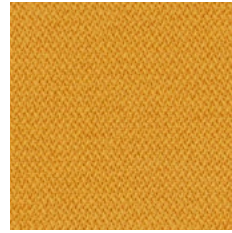
CSE01



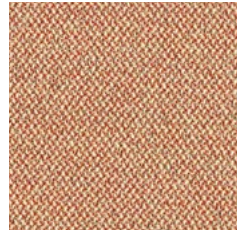
CSE31



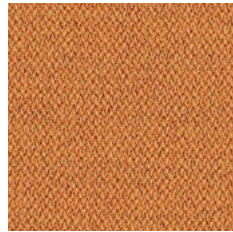
CSE32



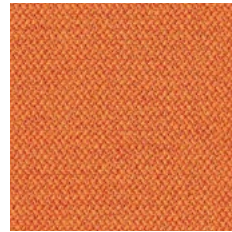
CSE03



CSE25



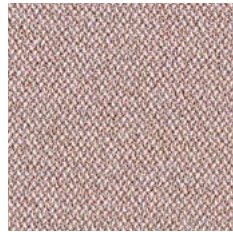
CSE27



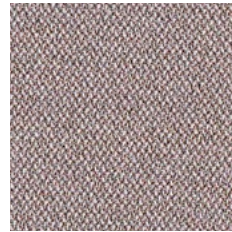
CSE05



CSE26



CSE24



CSE23



CSE19



CSE06



CSE17



CSE09



cigarette & match



high abrasion resistance



confirmed safety



easy to disinfect

SPECIFICATION

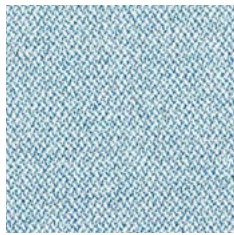
GO TO INDEX

# CSE | Era

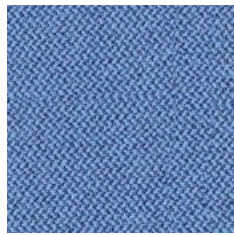
by Camira

EXTENDED

1



CSE38



CSE08



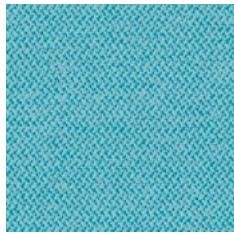
CSE12



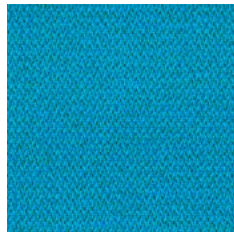
CSE40



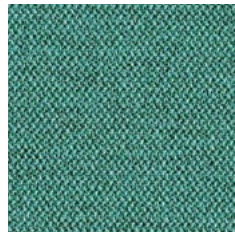
CSE15



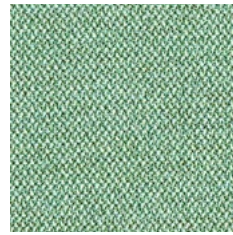
CSE20



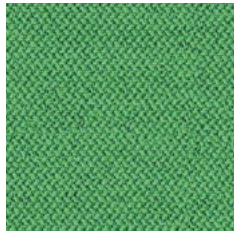
CSE10



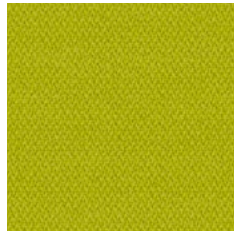
CSE37



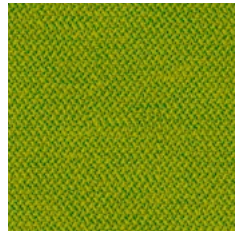
CSE36



CSE18



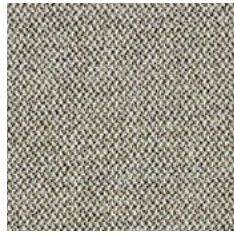
CSE07



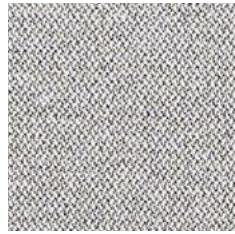
CSE16



CSE41



CSE45



CSE46



CSE21



CSE44

GO TO INDEX

SPECIFICATION



cigarette & match



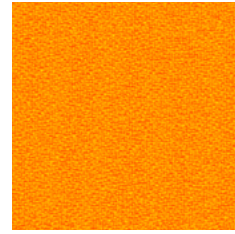
high abrasion resistance



confirmed safety



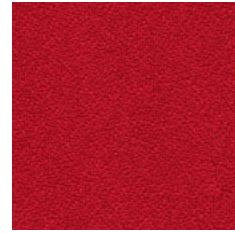
easy to disinfect



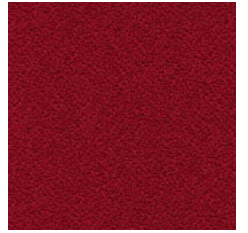
BN3005



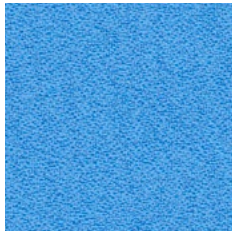
BN3012



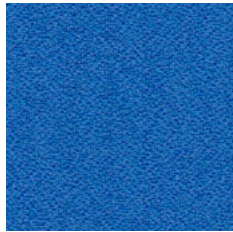
BN4011



BN4007



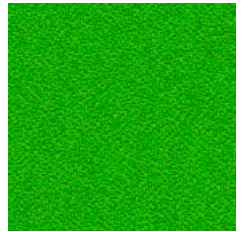
BN6006



BN6003



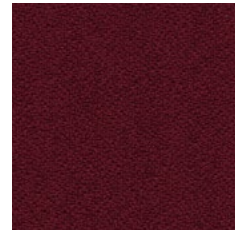
BN6016



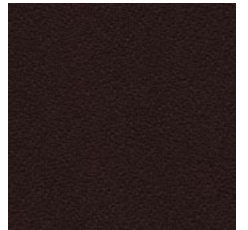
BN7048



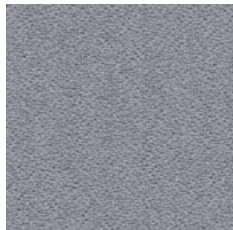
BN1008



BN4017



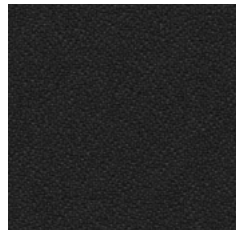
BN2036



BN8078



BN8010



BN8033



cigarette & match



high flame resistance



high abrasion resistance



confirmed safety



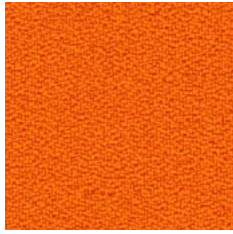
easy to disinfect

SPECIFICATION

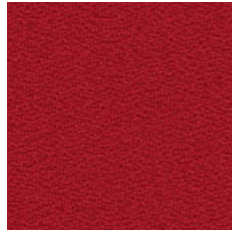
GO TO INDEX

# YB | Lucia

by Camira



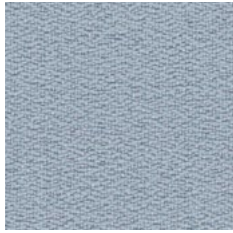
YB130



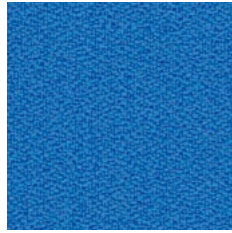
YB105



YB090



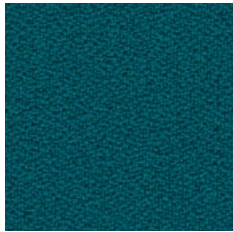
YB086



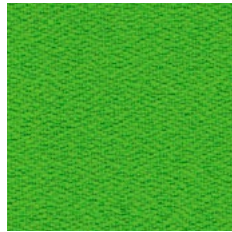
YB097



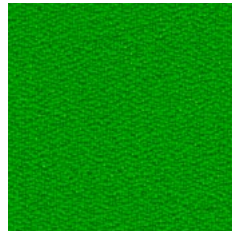
YB026



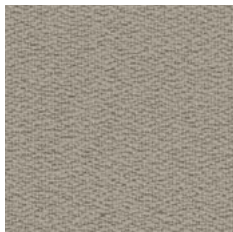
YB011



YB156



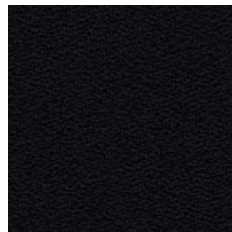
YB200



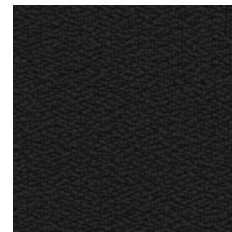
YB093



YB094



YB009



YB046

[GO TO INDEX](#)

[SPECIFICATION](#)



cigarette & match



recycled origin



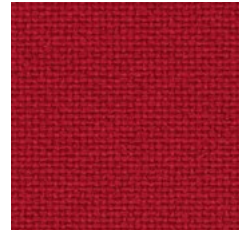
environmentally friendly



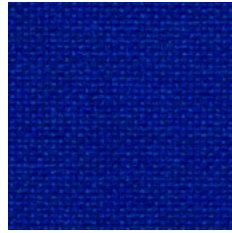
confirmed safety



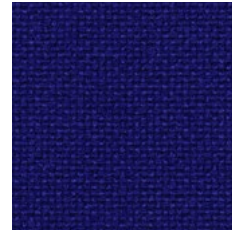
easy to disinfect



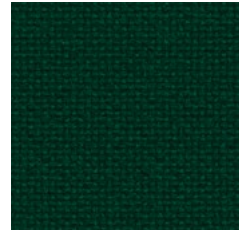
EF037



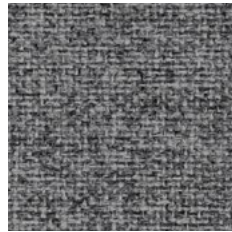
EF078



EF010



EF069



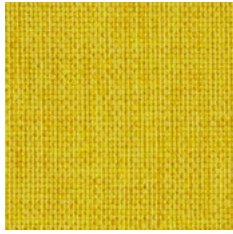
EF031



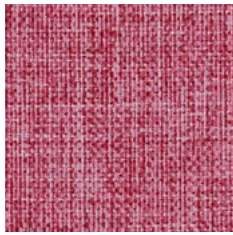
EF002



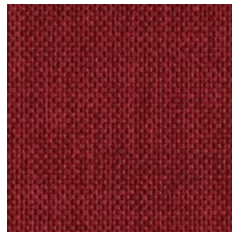
EF019



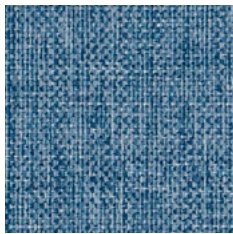
OL09



OL04



OL05



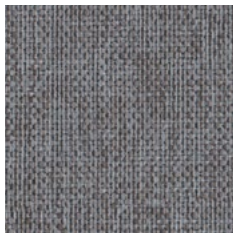
OL06



OL01



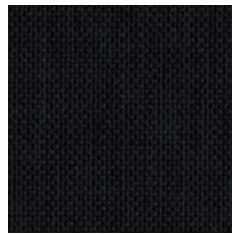
OL03



OL02

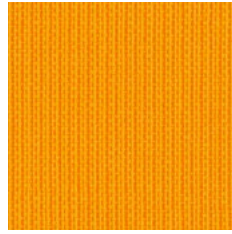


OL08

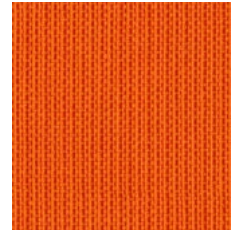


OL07

# SM/SMM | Sempre/Sempre Melange



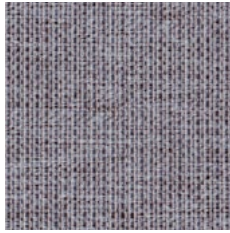
SM11



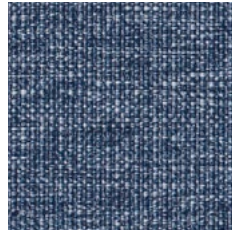
SM10



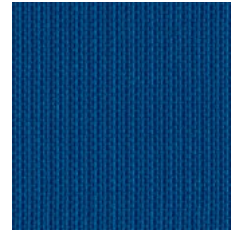
SM12



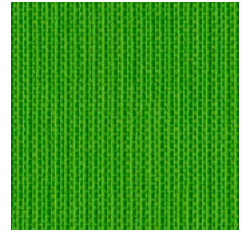
SMM01



SMM03



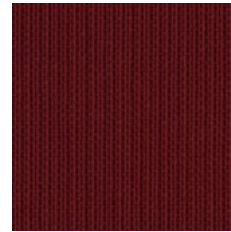
SM07



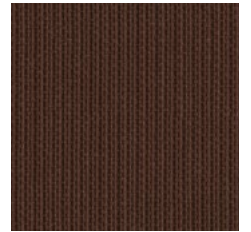
SM08



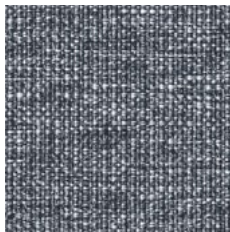
SM04



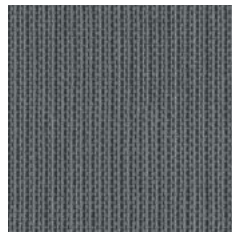
SM06



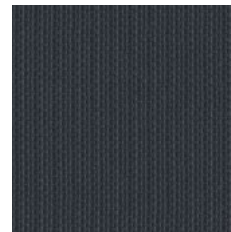
SM05



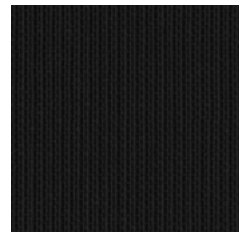
SMM02



SM03



SM02



SM01



cigarette & match



high abrasion resistance



confirmed safety



environmentally friendly

SPECIFICATION

GO TO INDEX

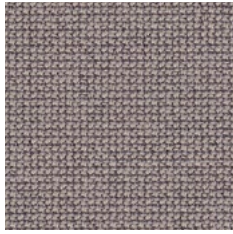




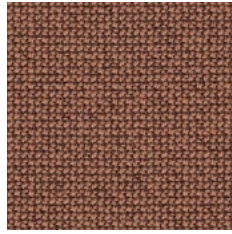
price group

# CUR | Cura

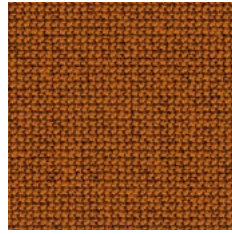
by Gabriel®



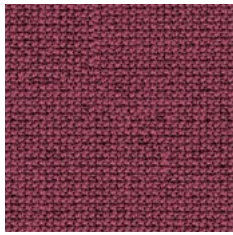
CUR61259



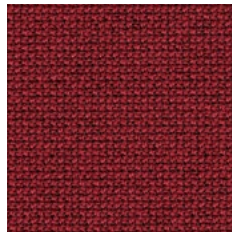
CUR61260



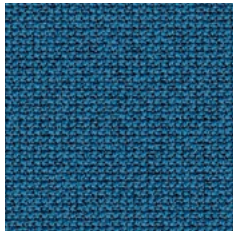
CUR62082



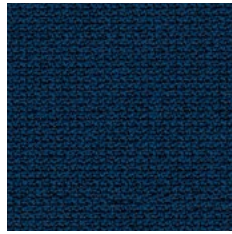
CUR64195



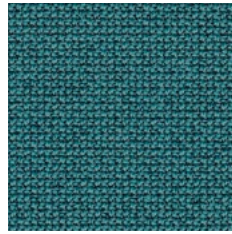
CUR64196



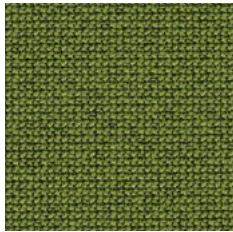
CUR66167



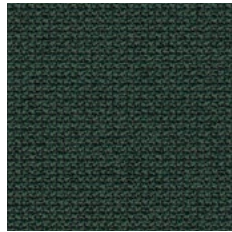
CUR66170



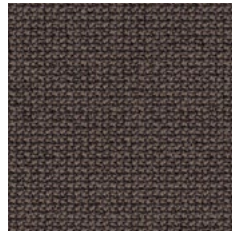
CUR68187



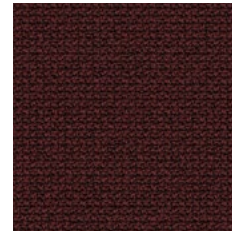
CUR68181



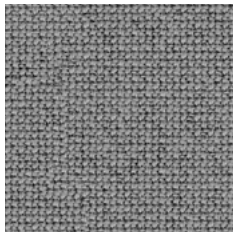
CUR68182



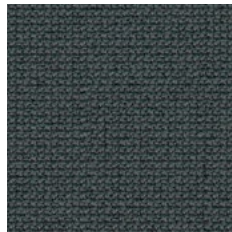
CUR61169



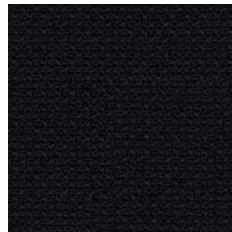
CUR61258



CUR60112



CUR60109



CUR60111

[GO TO INDEX](#)

[SPECIFICATION](#)



Cigarette & Match



High abrasion resistance



Environmentally friendly



Recycled origin

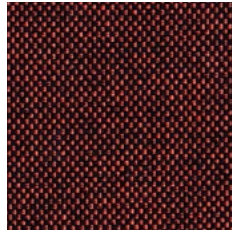


# EGL | Rivet

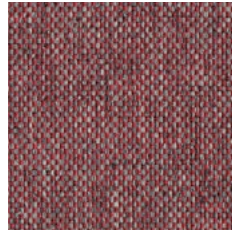
by Camira



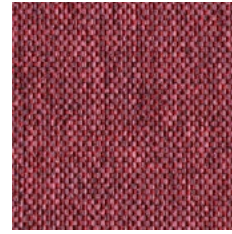
EGL14



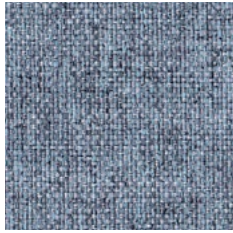
EGL32



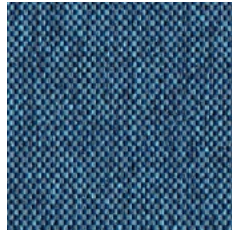
EGL13



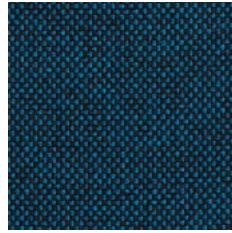
EGL12



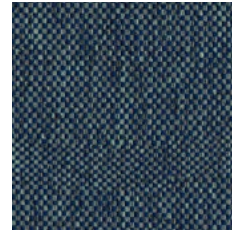
EGL16



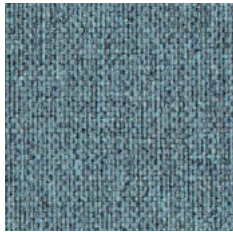
EGL24



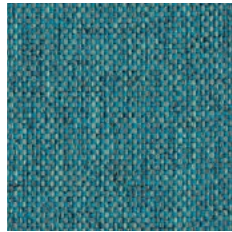
EGL35



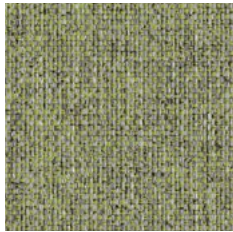
EGL27



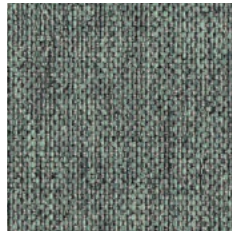
EGL20



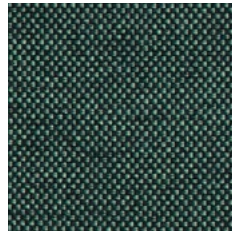
EGL21



EGL05



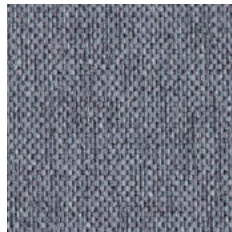
EGL15



EGL34



EGL01



EGL26



EGL50



EGL37

[GO TO INDEX](#)

[SPECIFICATION](#)



cigarette & match



environmentally friendly



recycled origin



easy to disinfect



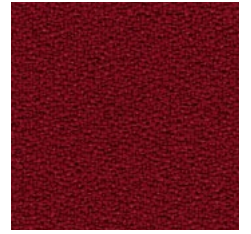
XR072



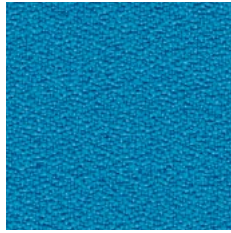
XR076



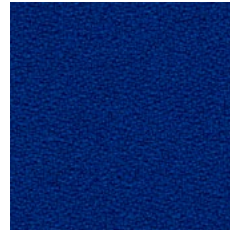
XR079



XR136



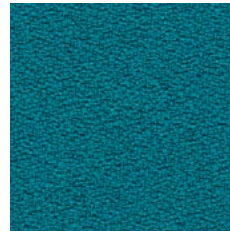
XR073



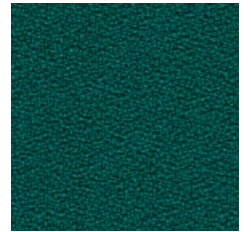
XR005



XR026



XR160



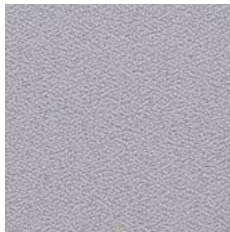
XR047



XR108



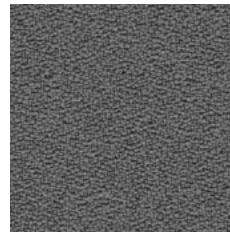
XR046



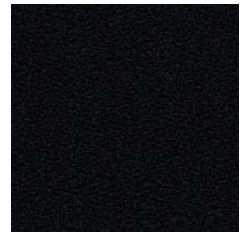
XR094



XR171



XR081



XR009



cigarette & match



high flame resistance



environmentally friendly



recycled origin



high abrasion resistance



confirmed safety



easy to disinfect

SPECIFICATION

GO TO INDEX

# XR | Xtreme

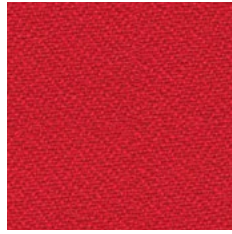
by Camira

EXTENDED

2



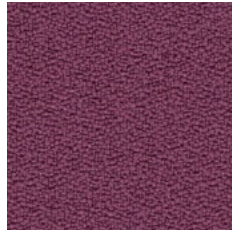
XR168



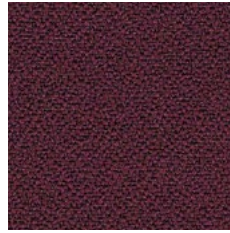
XR105



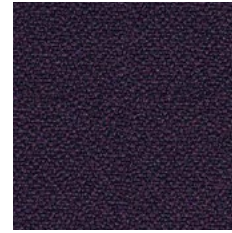
XR101



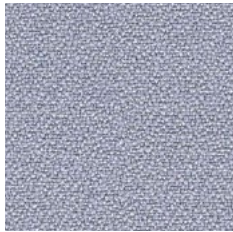
XR102



XR030



XR084



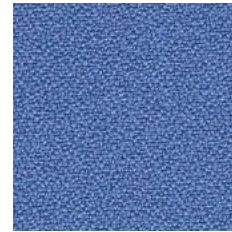
XR173



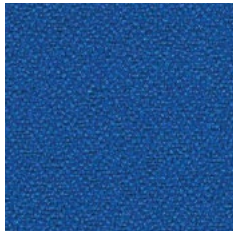
XR004



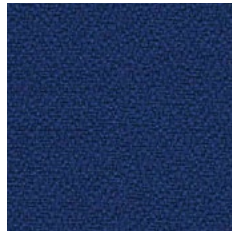
XR095



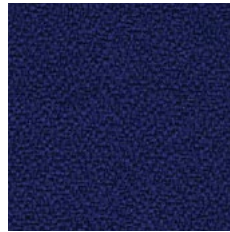
XR097



XR035



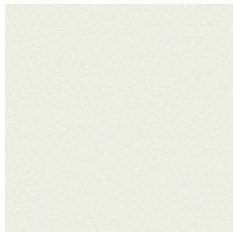
XR082



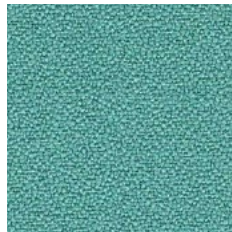
XR100



XR024



XR165



XR074

[GO TO INDEX](#)

[SPECIFICATION](#)



cigarette & match



high flame resistance



environmentally friendly



recycled origin



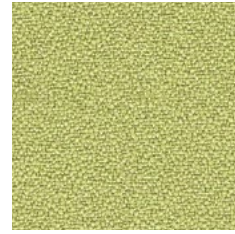
high abrasion resistance



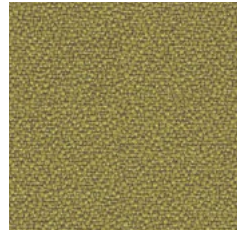
confirmed safety



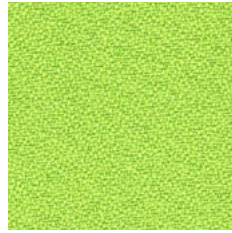
easy to disinfect



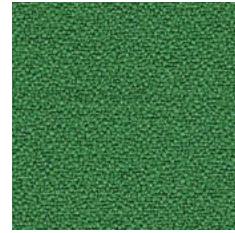
XR096



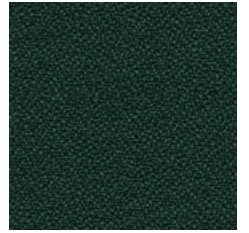
XR077



XR156



XR159



XR045



XR071



XR091



XR141



XR145



XR172



cigarette & match



high flame resistance



environmentally friendly



recycled origin



high abrasion resistance



confirmed safety



easy to disinfect

SPECIFICATION

GO TO INDEX

# VL | Valencia

by Spradling®



VL6012



VL6003



VL2074



VL2001



VL7001



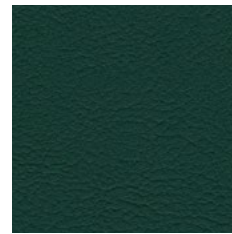
VL3069



VL3067



VL5001



VL5069



VL1048



VL0034



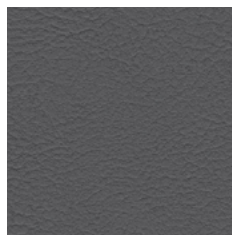
VL4041



VL0020



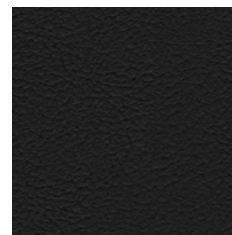
VL4045



VL4043



VL4003



VL9035

[GO TO INDEX](#)

[SPECIFICATION](#)



cigarette & match



high abrasion resistance



easily washable



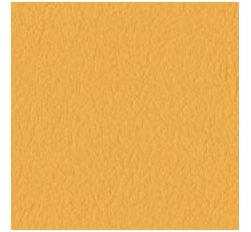
confirmed safety



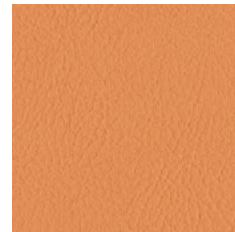
easy to disinfect



VL2020



VL2111



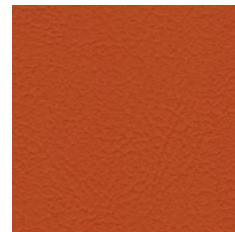
VL6013



VL2116



VL9245



VL6019



VL0035



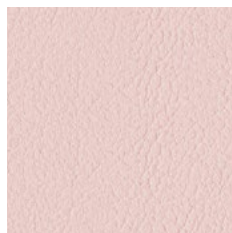
VL2112



VL2075



VL2062



VL2113



VL2114



VL2021



VL2002



cigarette & match



high abrasion resistance



easily washable



confirmed safety



easy to disinfect

SPECIFICATION

GO TO INDEX

# VL | Valencia

by Spradling®

EXTENDED

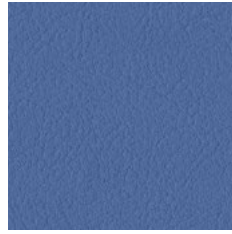
2



VL2106



VL2107



VL3001



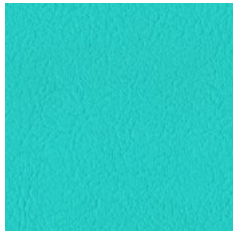
VL4042



VL5065



VL0370



VL5056



VL5057



VL0337



VL2119



VL2108



VL3068

GO TO INDEX

SPECIFICATION



cigarette & match



high abrasion resistance



easily washable



confirmed safety



easy to disinfect



VL8415



VL6438



VL8438



VL5451



VL2110



VL5041



VL1020



VL1049



VL1001



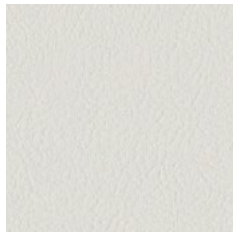
VL1050



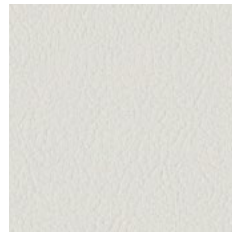
VL2117



VL0002



VL8020



VL8020



VL8032



cigarette & match



high abrasion resistance



easily washable



confirmed safety



easy to disinfect

GO TO INDEX

# VL | Valencia

by Spradling®

EXTENDED

2



VL4044



VL2522



VL4001



VL9001



VL2115



VL0033



VL0001



VL9607



VL2008



VL4040



VL5032



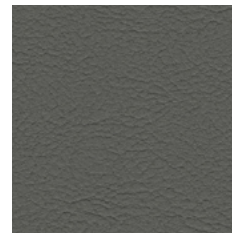
VL4020



VL4002



VL5002



VL4052

GO TO INDEX



cigarette & match



high abrasion resistance



easily washable



confirmed safety



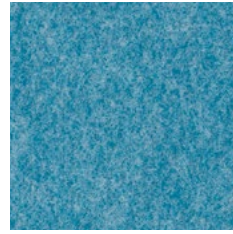
easy to disinfect

# HG | Hush

by Gabriel®



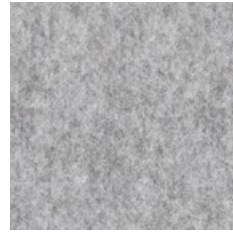
HG63058



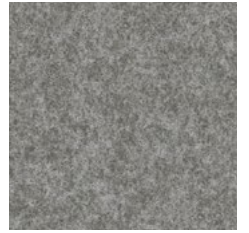
HG67046



HG68103



HG60158



HG60159

SPECIFICATION



cigarette & match



confirmed safety



easy to disinfect

# YN | Urban

by Camira



YN210



YN083



YN207



YN145



YN009



Cigarette & Match



High flame resistance



High abrasion resistance



Recycled origin



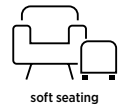
Confirmed safety

SPECIFICATION

GO TO INDEX

# BO | Boogie

by Textaafoam



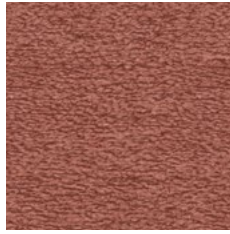
2



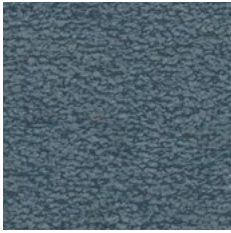
BO170



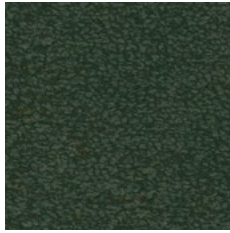
BO23



BO94



BO153



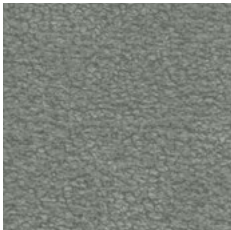
BO162



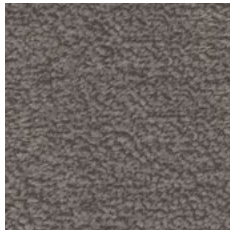
BO84



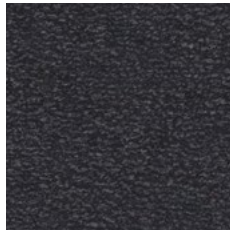
BO02



BO206



BO12



BO68

GO TO INDEX

SPECIFICATION



high abrasion  
resistance

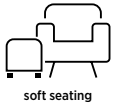


cigarette  
& match



confirmed  
safety

2

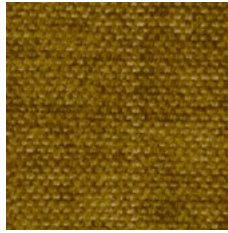


# HM | Home

by Textafoam



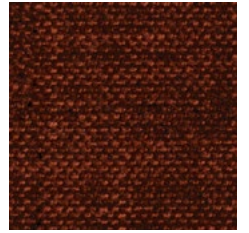
HM05



HM216



HM14



HM34



HM156



HM66



HM12



HM15



high abrasion  
resistance



cigarette  
& match



confirmed  
safety

SPECIFICATION

GO TO INDEX





price group

# SX | Silvertex

by Spradling®



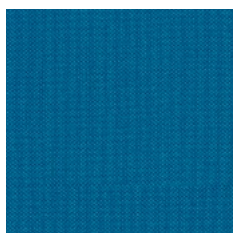
SX2012



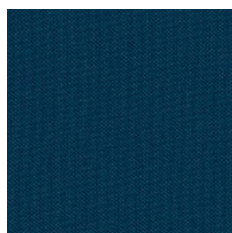
SX0013



SX2016



SX3066



SX3007



SX5008



SX5020



SX0001



SX0009



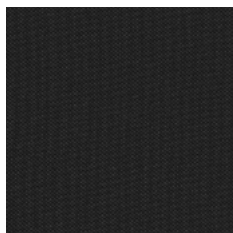
SX4024



SX4001



SX4002



SX9001

[GO TO INDEX](#)

[SPECIFICATION](#)



cigarette & match



high abrasion resistance



easily washable



confirmed safety



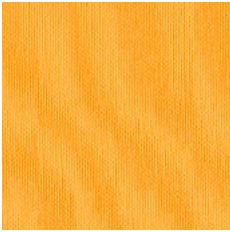
easy to disinfect



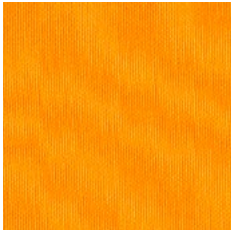
SX2089



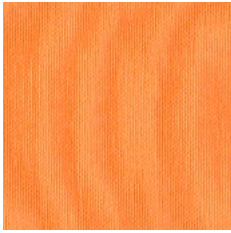
SX4004



SX2093



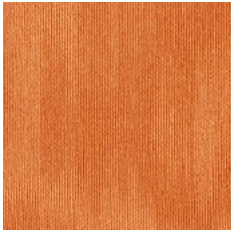
SX6065



SX6062



SX2105



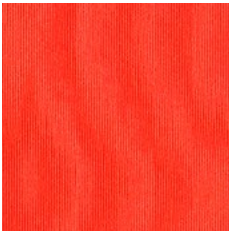
SX2003



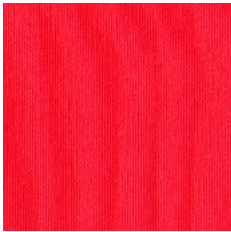
SX6061



SX9243



SX2096



SX2095



SX2011



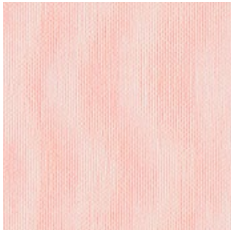
SX7251



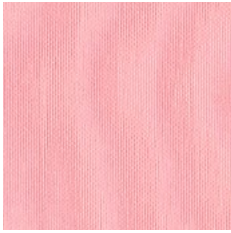
SX2064



SX6004



SX2099



SX2098



SX2097



SX7001



cigarette & match



high abrasion resistance



easily washable



confirmed safety



easy to disinfect

SPECIFICATION

GO TO INDEX

# SX | Silvertex

by Spradling®

EXTENDED

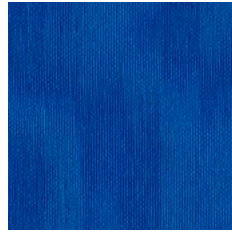
3



SX2103



SX2102



SX3067



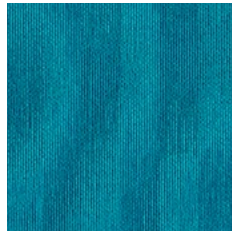
SX2094



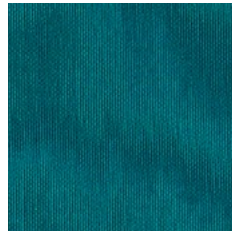
SX3068



SX3352



SX3001



SX2100



SX5063



SX2318



SX6434



SX5444



SX5468



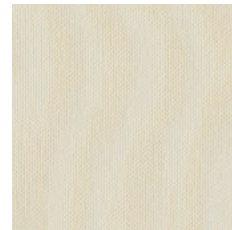
SX2092



SX5019



SX1077



SX2090





SX1051



SX1078



SX1010



SX0002



SX5009



SX4012



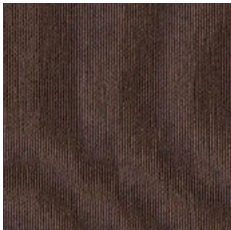
SX1014



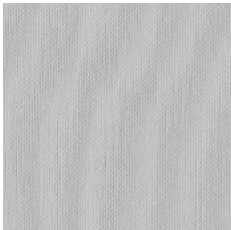
SX0073



SX5010



SX0005



SX2101



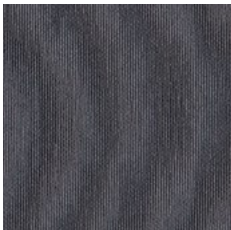
SX5039



SX4011



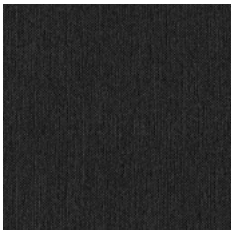
SX4010



SX4003



SX9002



SX3375



cigarette & match



high abrasion resistance



easily washable



confirmed safety



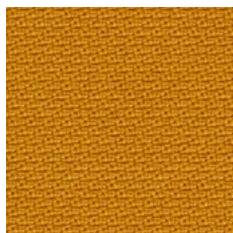
easy to disinfect

SPECIFICATION

GO TO INDEX

# STG/STMG | Step/Step Melange

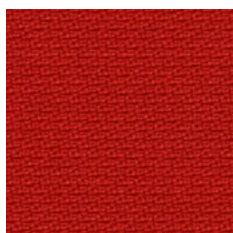
by Gabriel®



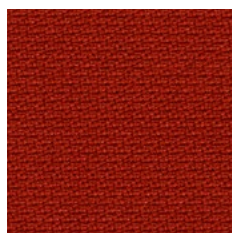
STG62057



STMG62057



STG63012



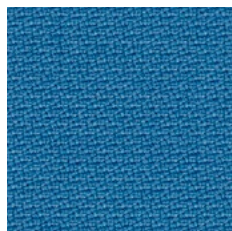
STG63075



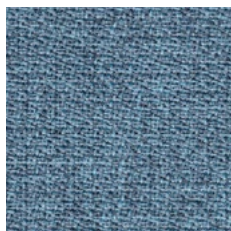
STMG63075



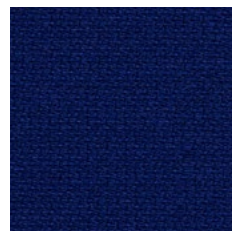
STG67004



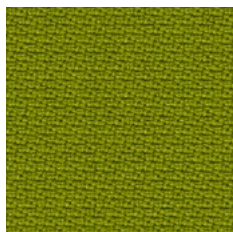
STG66018



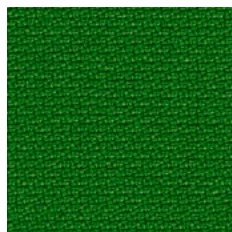
STMG67004



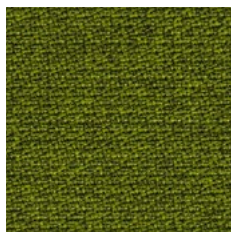
STG65011



STG68119



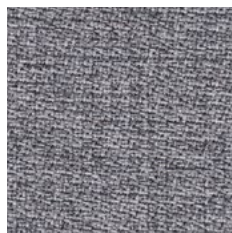
STG68120



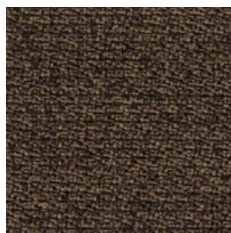
STMG68119



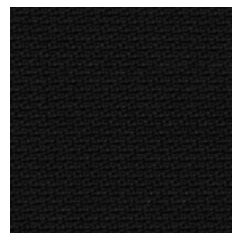
STMG61104



STMG60004



STMG61103



STG60999

[GO TO INDEX](#)

[SPECIFICATION](#)



cigarette & match



high flame resistance



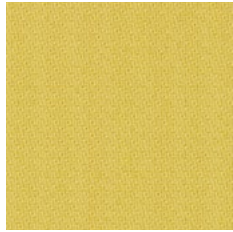
environmentally friendly



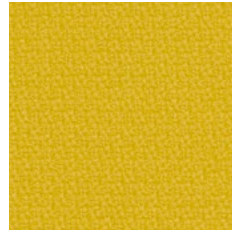
confirmed safety



easy to disinfect



STG68701



STG62073



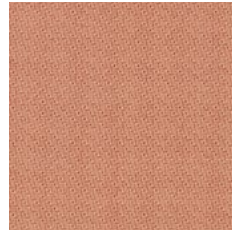
STG62746



STG62744



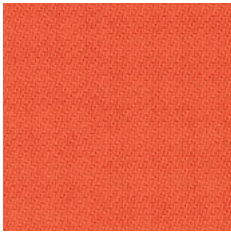
STG63736



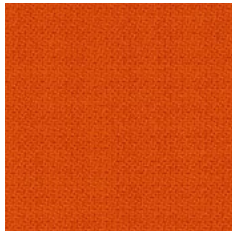
STG64767



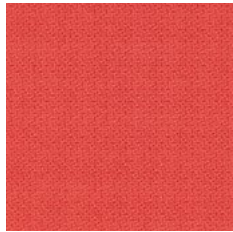
STG63739



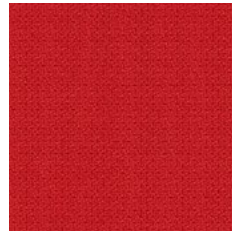
STG63738



STG63082



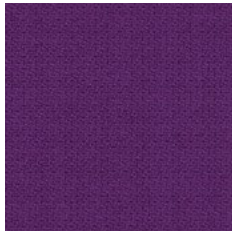
STG64178



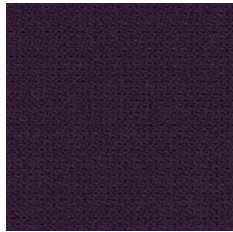
STG64179



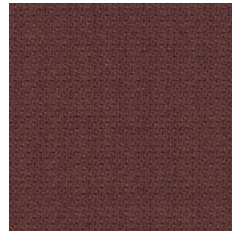
STG64013



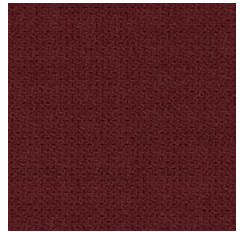
STG65023



STG65047



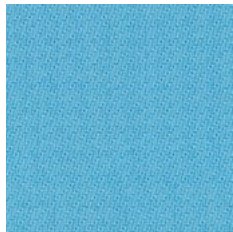
STG64770



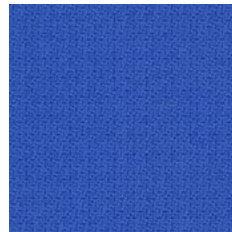
STG64159



STG60746



STG67735



STG66150



STG66151



STG66149



STG65018



cigarette & match



high flame resistance



environmentally friendly



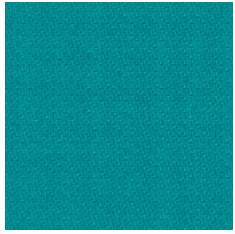
confirmed safety



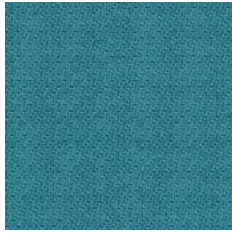
easy to disinfect

SPECIFICATION

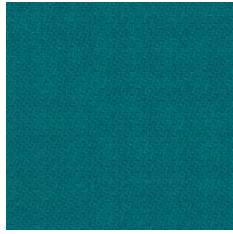
GO TO INDEX



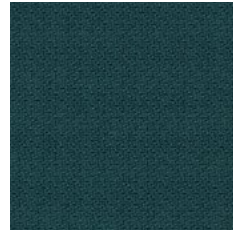
STG67073



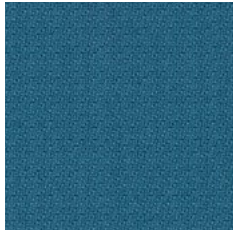
STG67072



STG67007



STG68158



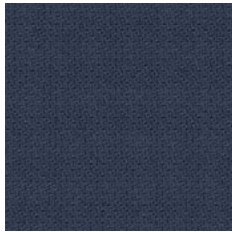
STG66763



STG66764



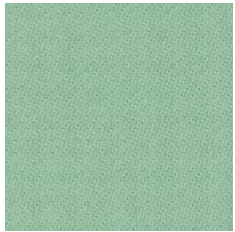
STG66152



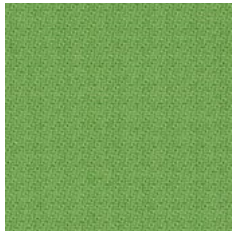
STG66148



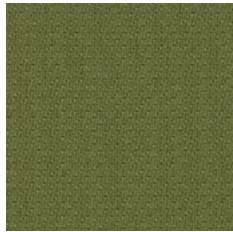
STG66765



STG68118



STG68159



STG68700



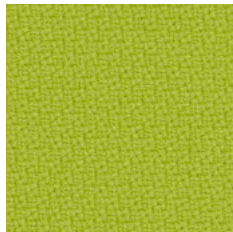
STG68165



STG68798



STG68799



STG68163



STG68162

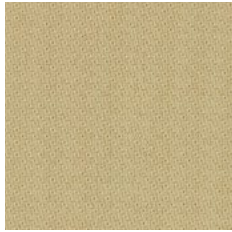


STG68161



STG68121

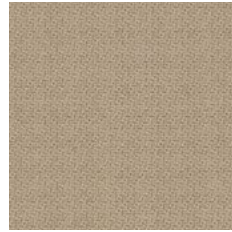




STG61787



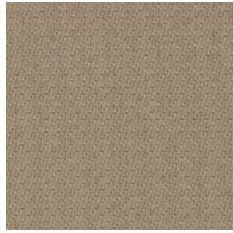
STG61788



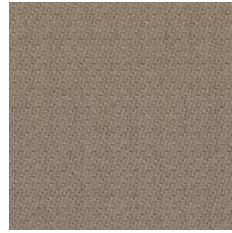
STG61149



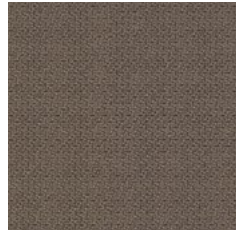
STG61103



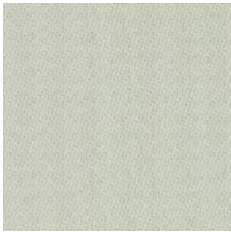
STG61791



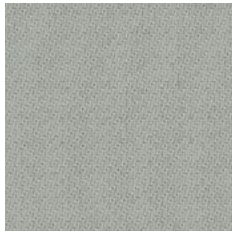
STG61789



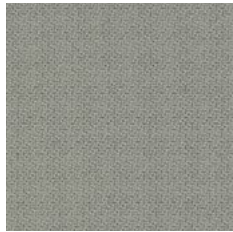
STG60090



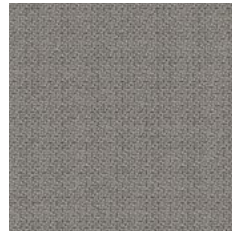
STG60745



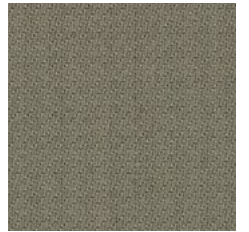
STG60004



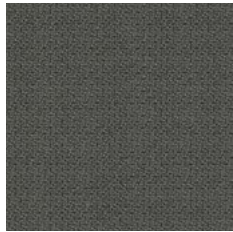
STG60091



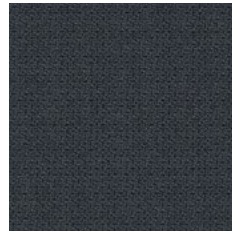
STG60011



STG61793



STG60092



STG66019



STG60021



cigarette & match



high flame resistance



environmentally friendly



confirmed safety



easy to disinfect

SPECIFICATION

GO TO INDEX

# STMG | Step Melange

by Gabriel®

EXTENDED

3



STMG62146



STMG62144



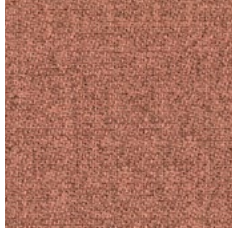
STMG62143



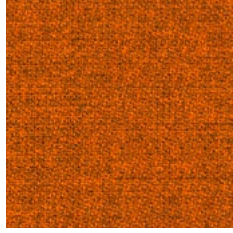
STMG63136



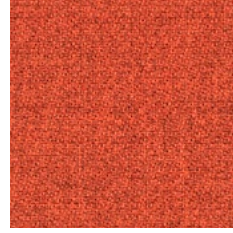
STMG63139



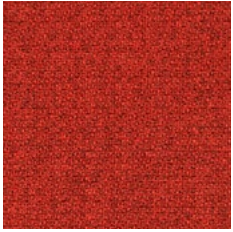
STMG64267



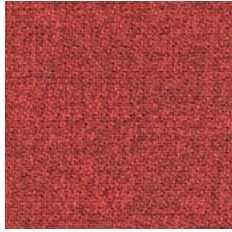
STMG63082



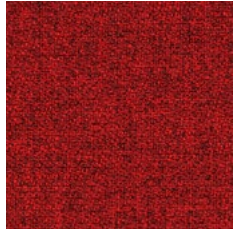
STMG63138



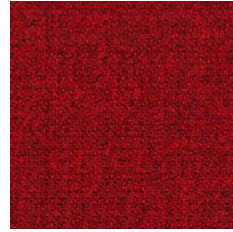
STMG63137



STMG64178



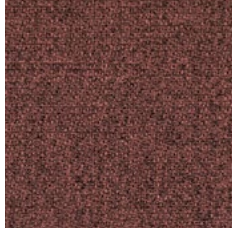
STMG64179



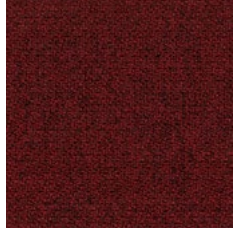
STMG64013



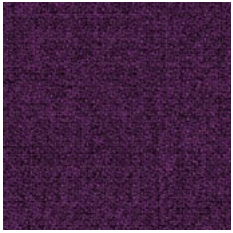
STMG61151



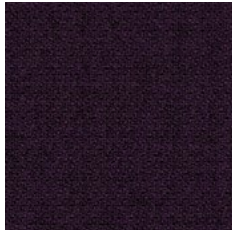
STMG64270



STMG64159



STMG65023

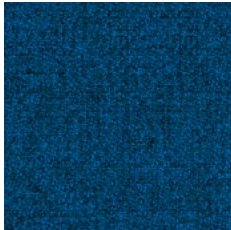


STMG65047

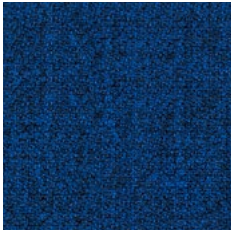


# STMG | Step Melange

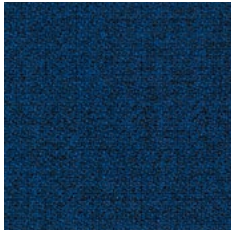
by Gabriel®



STMG66151



STMG66150



STMG66149



STMG65018



STMG60346



STMG66152



STMG66148



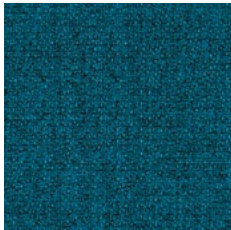
STMG66265



STMG65011



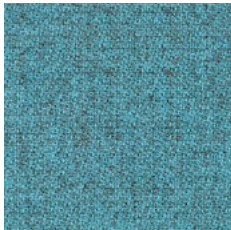
STMG66018



STMG66263



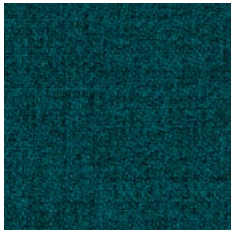
STMG66264



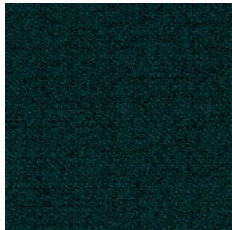
STMG67135



STMG67072



STMG67007



STMG668158



STMG68118



STMG68159



cigarette & match



high flame resistance



environmentally friendly



confirmed safety



easy to disinfect

SPECIFICATION

GO TO INDEX

# STMG | Step Melange

by Gabriel®

EXTENDED

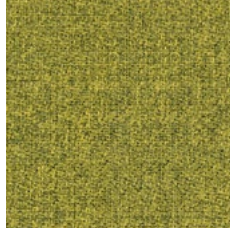
3



STMG68298



STMG68301



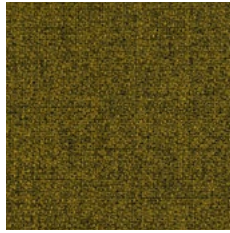
STMG62073



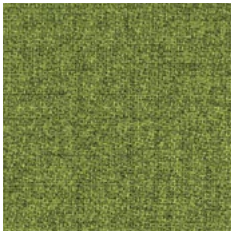
STMG68299



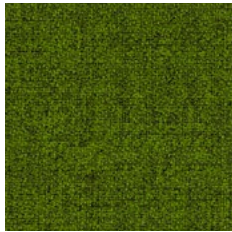
STMG68300



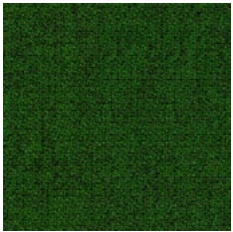
STMG68165



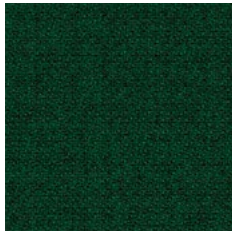
STMG68163



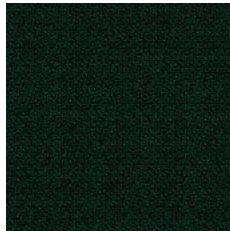
STMG68162



STMG68120



STMG68161



STMG68121



cigarette & match



high flame resistance



environmentally friendly



confirmed safety



easy to disinfect

# STMG | Step Melange

by Gabriel®



STMG61288



STMG61286



STMG61289



STMG61149



STMG61291



STMG61287



STMG61293



STMG61152



STMG60090



STMG60345



STMG60011



STMG60092



STMG66019



STMG60021



cigarette & match



high flame resistance



environmentally friendly



confirmed safety

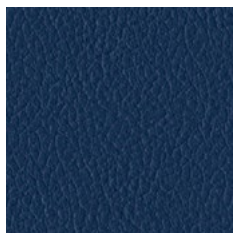


easy to disinfect

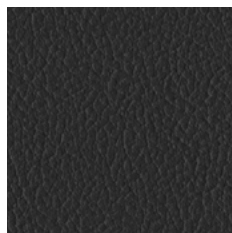
SPECIFICATION

GO TO INDEX

# SP | Split Leather



SP06



SP01

- EN** front of the chair – Split Leather SP, back – Imitation Leather V, in matching colours
- PL** przód krzesła – Split Leather SP, tył – Imitation Leather V, w pasujących do siebie kolorach
- DE** Vorderseite der Stühle in Split Leather SP, Rückseite der Stühle in Imitation Leather V in identischen Farben
- FR** partie avant du siège en Split Leather SP, partie arrière en Imitation Leather V de la couleur correspondante

[GO TO INDEX](#)

[SPECIFICATION](#)



cigarette  
& match



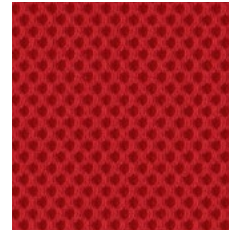
natural  
origin

# RN | Runner

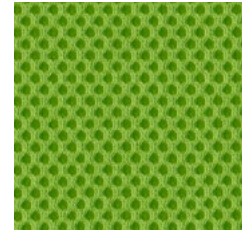
mesh 3D fabric by Gabriel®



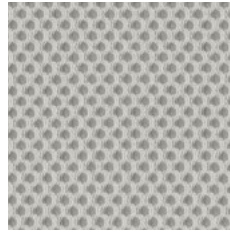
**RN63034**



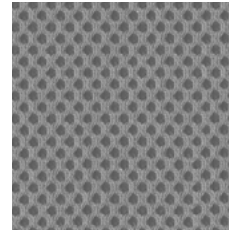
**RN64089**



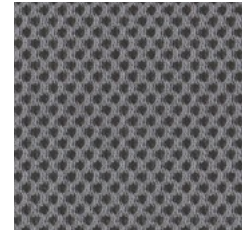
**RN68056**



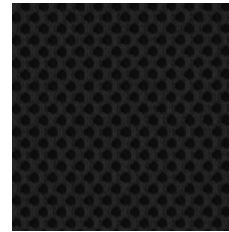
**RN60061**



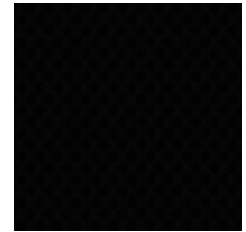
**RN60165**



**RN60011**



**RN60025**



**RN60999**



cigarette & match



confirmed safety



environmentally friendly



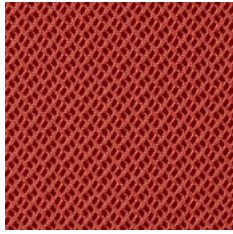
easy to disinfect

[SPECIFICATION](#)

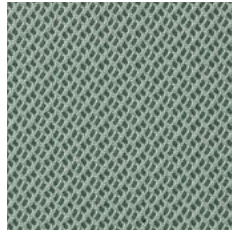
[GO TO INDEX](#)

# RH | Rhythm

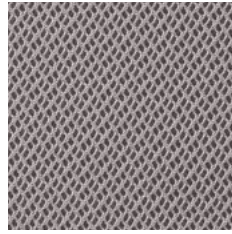
by Gabriel®



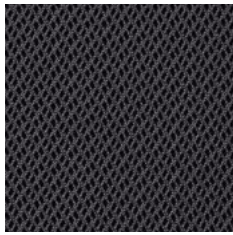
RH63067



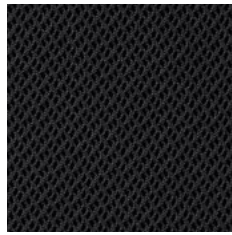
RH68121



RH60165



RH60025



RH60999

SPECIFICATION



Cigarette & Match



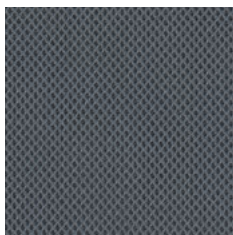
High flame resistance



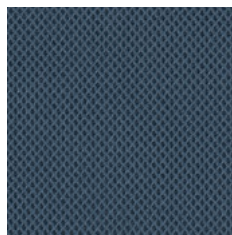
Confirmed safety

# HQ | Harlequin

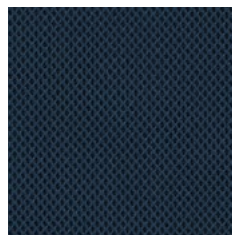
by Gabriel®



HQ60126



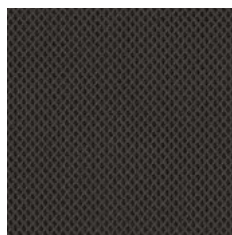
HQ66058



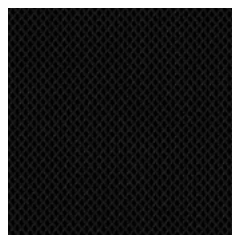
HQ60166



HQ61152



HQ61188



HQ60999



Cigarette & Match



High abrasion resistance



Recycled origin



Environmentally friendly



Confirmed safety

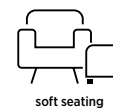
GO TO INDEX

SPECIFICATION



# MU | Moulin-FR

by Crevin

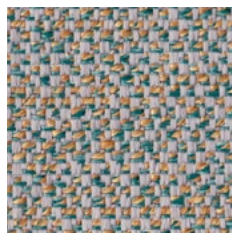


soft seating

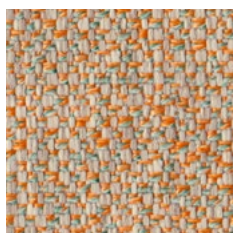
3



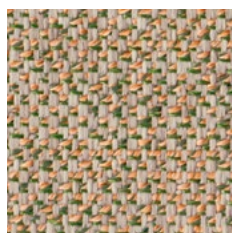
MU20



MU33



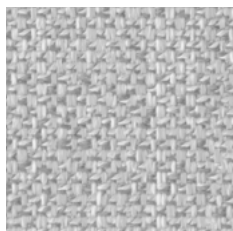
MU26



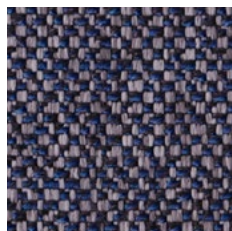
MU38



MU62



MU51



MU47



MU52

[GO TO INDEX](#)

[SPECIFICATION](#)



cigarette & match

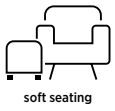


recycled origin



confirmed safety

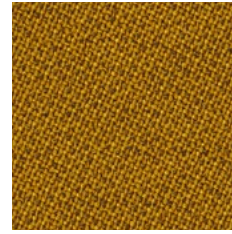
3



soft seating

# CG | Chili

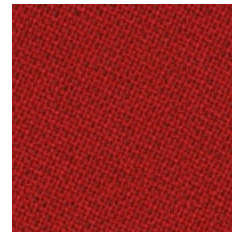
by Gabriel®



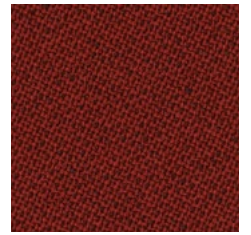
CG68198



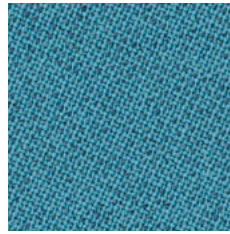
CG61172



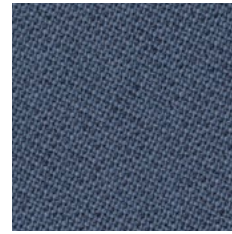
CG64202



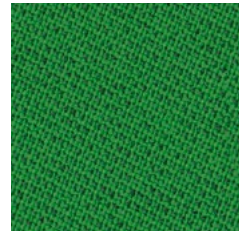
CG64203



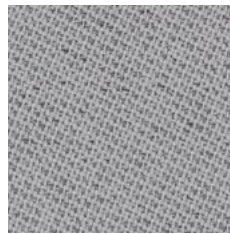
CG66176



CG60081



CG68193



CG60115



CG61171



CG60999



cigarette & match



high flame resistance



environmentally friendly



recycled origin



confirmed safety

SPECIFICATION

GO TO INDEX





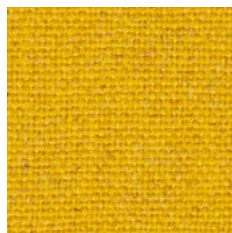
price group

# MLF | Main Line Flax

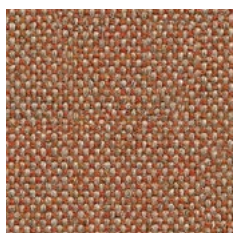
by Camira



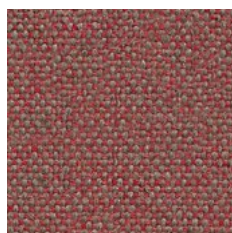
MLF20



MLF17



MLF08



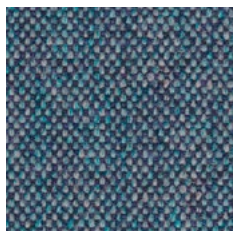
MLF03



MLF13



MLF01



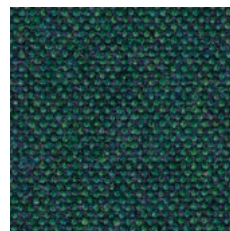
MLF22



MLF36



MLF09



MLF32



MLF23



MLF63



MLF16



MLF28

[GO TO INDEX](#)

[SPECIFICATION](#)



Cigarette & Match



High flame resistance



Environmentally friendly



Natural origin



# NF | skai® Parotega

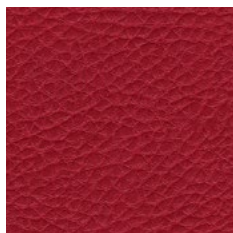
by Continental



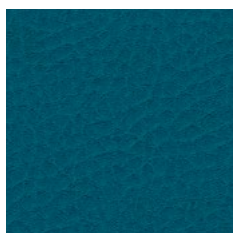
NF662



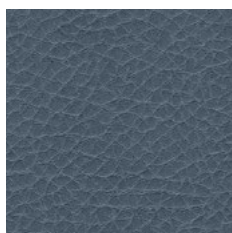
NF765



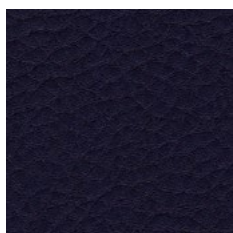
NF665



NF766



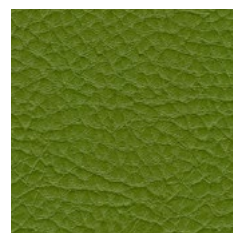
NF770



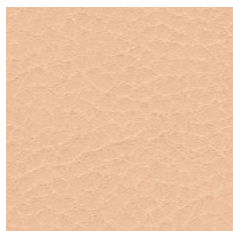
NF729



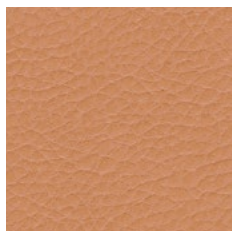
NF657



NF705



NF653



NF733



NF737



NF661



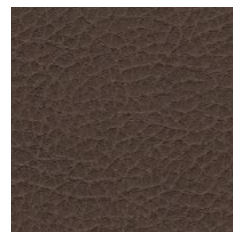
NF763



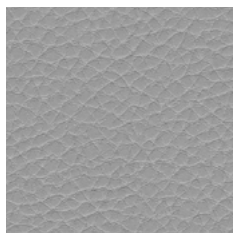
NF658



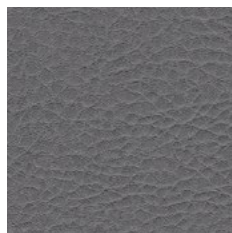
NF660



NF704



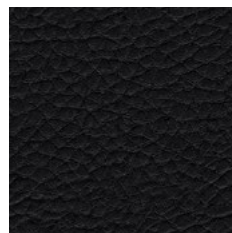
NF730



NF731



NF663



NF659

[GO TO INDEX](#)

[SPECIFICATION](#)



Cigarette & Match



High flame resistance



Natural origin



High abrasion resistance



Easily washable



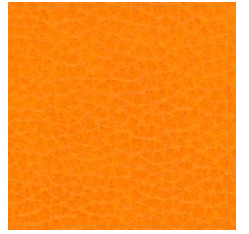
NF652



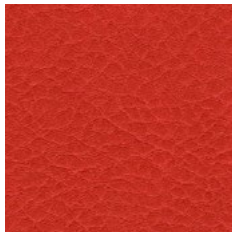
NF632



NF706



NF666



NF702



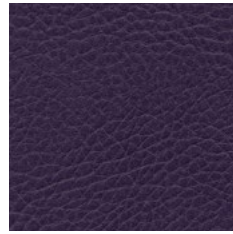
NF707



NF764



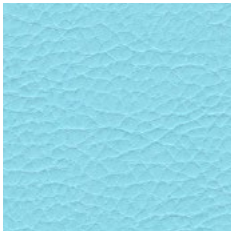
NF735



NF736



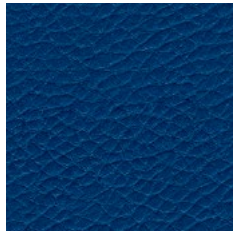
NF664



NF708



NF709



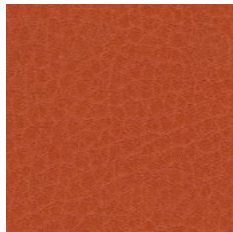
NF710



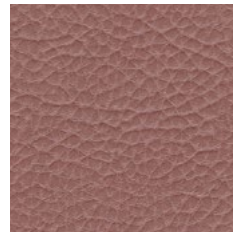
NF767



NF768



NF654



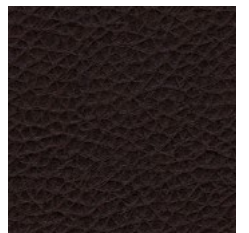
NF762



NF655



NF769



NF656



Cigarette & Match



High flame resistance



Natural origin



High abrasion resistance



Easily washable

SPECIFICATION

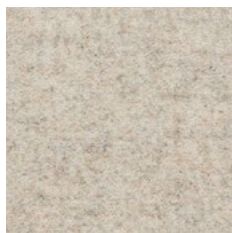
GO TO INDEX

# CUZ | Blazer

by Camira



CUZ28



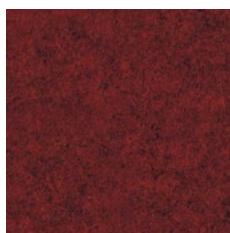
CUZ2Q



CUZ2W



CUZ82



CUZ90



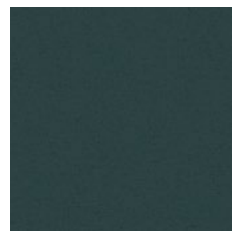
CUZ1R



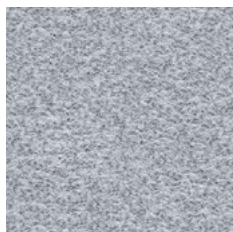
CUZ33



CUZ1N



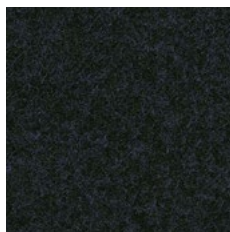
CUZ1P



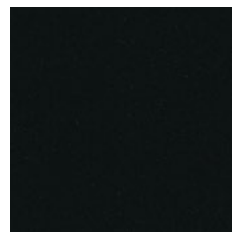
CUZ1E



CUZ30



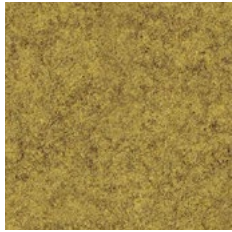
CUZ62



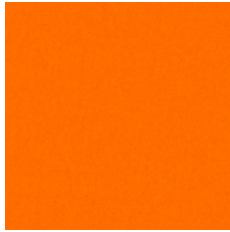
CUZ08



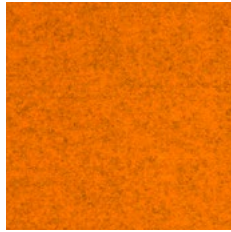
CUZ3M



CUZ58



CUZ4R



CUZ3S



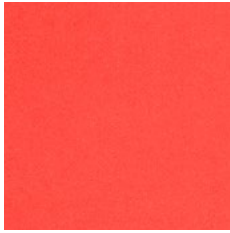
CUZ3L



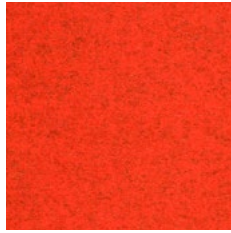
CUZ4L



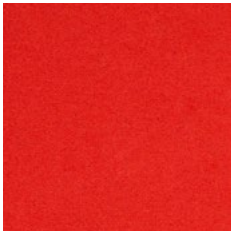
CUZ4U



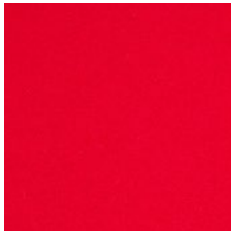
CUZ4N



CUZ3Q



CUZ39



CUZ18



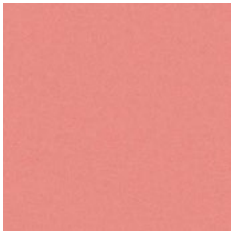
CUZ63



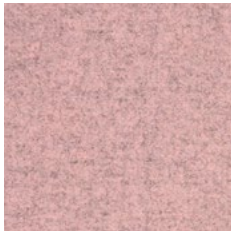
CUZ13



CUZ3W



CUZ4Q



CUZ3N



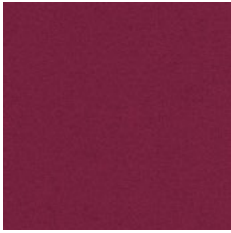
CUZ3T



CUZ3P



CUZ3V



CUZ21



CUZ4M



CUZ2T



CUZ4T



CUZ4C

# CUZ | Blazer

by Camira

EXTENDED

4



CUZ2Z



CUZ4J



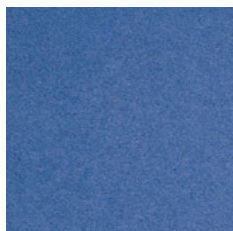
CUZ4H



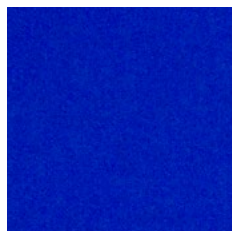
CUZ02



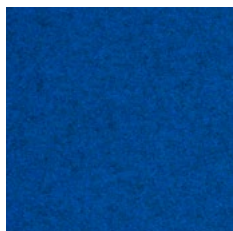
CUZ2U



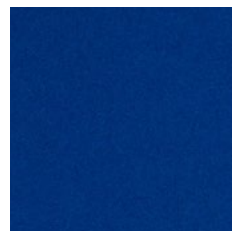
CUZ1V



CUZ4P



CUZ3Z



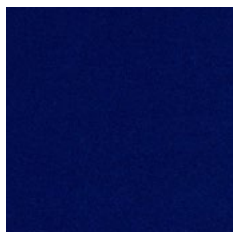
CUZ26



CUZ1Y



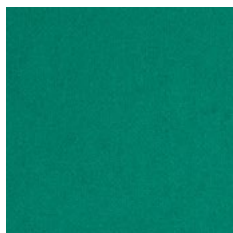
CUZ3X



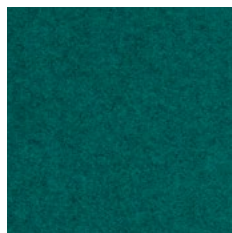
CUZ09



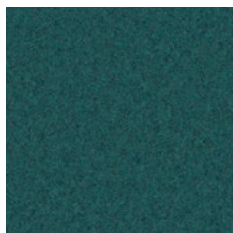
CUZ1W



CUZ3A



CUZ4F



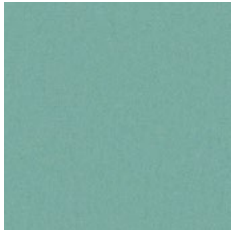
CUZ4G



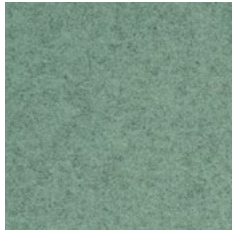
CUZ3B



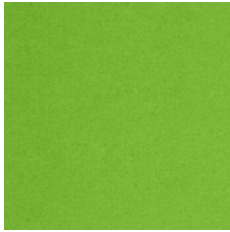
CUZ4B



CUZ4S



CUZ4K



CUZ1L



CUZ3U



CUZ53



CUZ1F



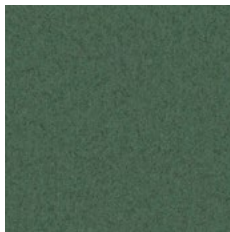
CUZ1K



CUZ4V



CUZ3Y



CUZ3R



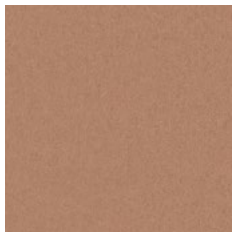
CUZ4E



CUZ47



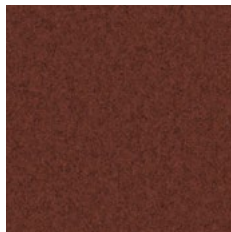
CUZ86



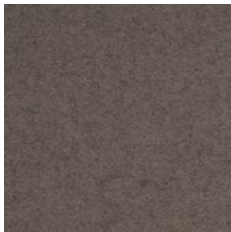
CUZ4X



CUZ4A



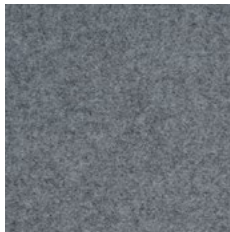
CUZ4D



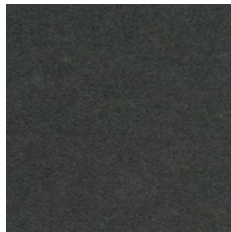
CUZ31



CUZ4W



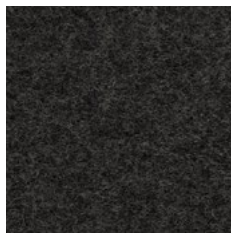
CUZ1J



CUZ12



CUZ35



CUZ67



cigarette & match



natural origin

SPECIFICATION

GO TO INDEX

# LTH | Blazer Lite

by Camira



LTH46



LTH52



LTH63



LTH64



LDS08



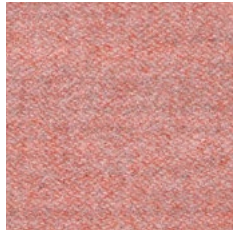
LDS43



LDS84



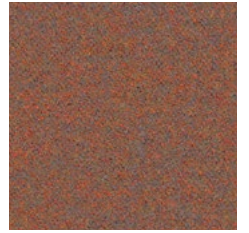
LDS79



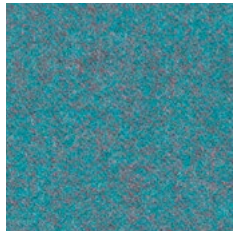
LDS74



LDS73



LDS76



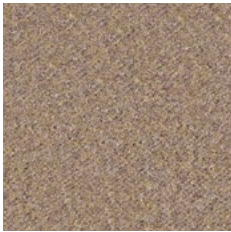
LDS56



LDS54



LDS49



LDS32



LDS33



LDS37



LDS39



LDS88



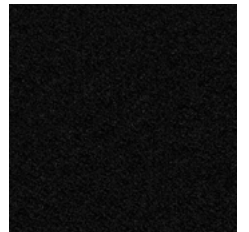
LDS16



LDS60



LDS17



LDS27



cigarette & match



high abrasion resistance



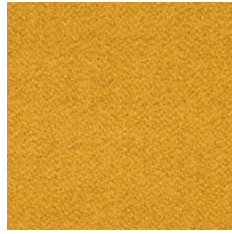
environmentally friendly

SPECIFICATION

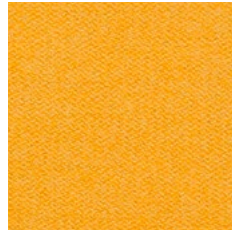
GO TO INDEX



LDS45



LDS28



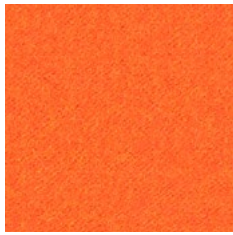
LDS44



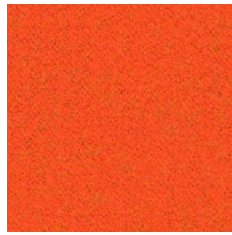
LDS75



LDS83



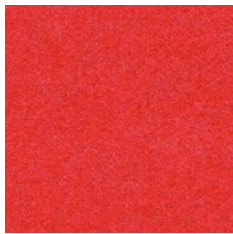
LDS82



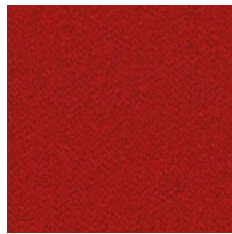
LDS81



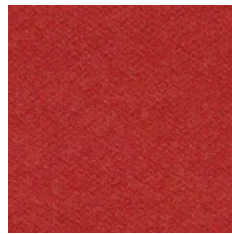
LDS80



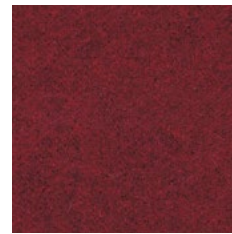
LDS71



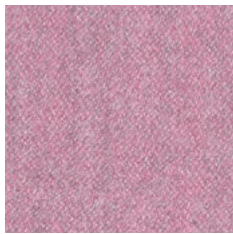
LDS86



LDS85



LDS87



LDS07



LDS72



LDS36



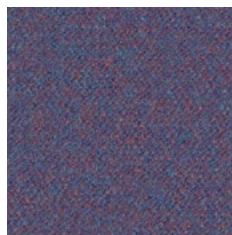
LDS66



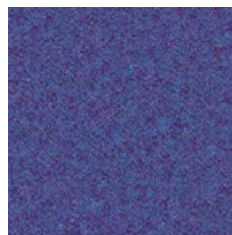
LDS70



LDS67



LDS64



LDS68



LDS65

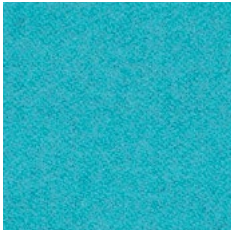


LDS63

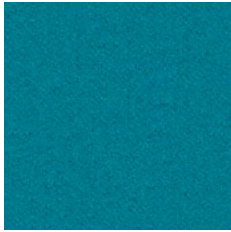


LDS62

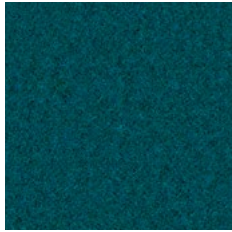




LDS55



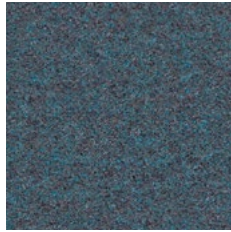
LDS57



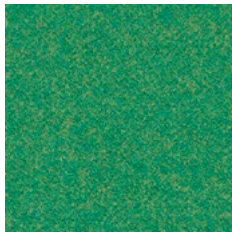
LDS59



LDS24



LDS58



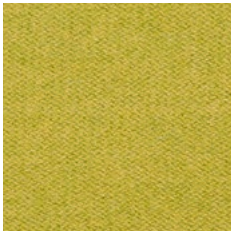
LDS53



LDS52



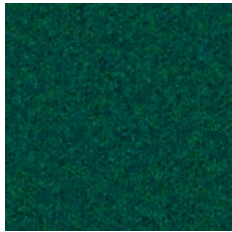
LDS51



LDS46



LDS47



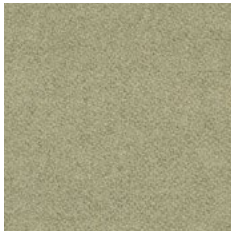
LDS50



LDS42



LDS41



LDS23



LDS48



LDS20



LDS19



LDS18



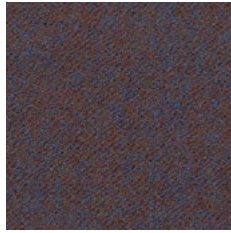
LDS22



LDS77



LDS78



LDS38



cigarette & match



high abrasion resistance



environmentally friendly

SPECIFICATION

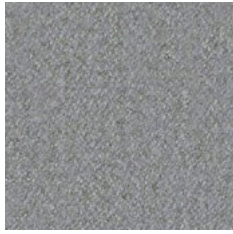
GO TO INDEX

# LDS | Synergy

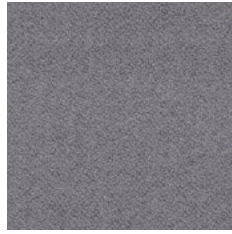
by Camira

EXTENDED

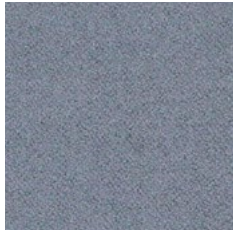
4



LDS05



LDS31



LDS21



LDS35



LDS29



LDS34



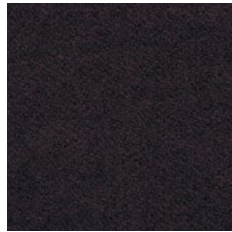
LDS69



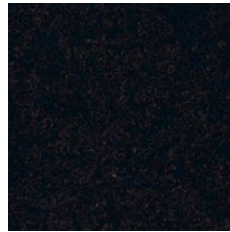
LDS25



LDS61



LDS26



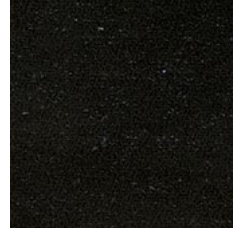
LDS40

# FYR | 24/7 Flax

by Camira



FYR03



FYR21



FYR06

[SPECIFICATION](#)



cigarette & match



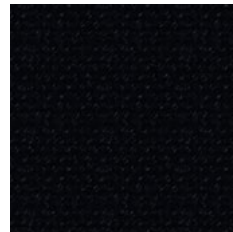
high flame resistance



heavy duty

# AS | Hi-Tech

by Camira



AS064



AS078

[SPECIFICATION](#)

[GO TO INDEX](#)



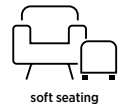
cigarette & match



antistatic

# FC | Focus Royal

by Gabriel®



4



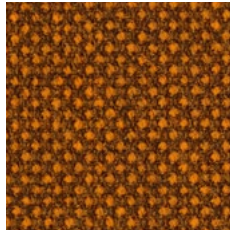
FC60509



FC62517



FC61539



FC63612



FC61536



FC66511



FC68535



FC61538



FC60511



FC60500

[GO TO INDEX](#)

[SPECIFICATION](#)



high abrasion  
resistance



cigarette  
& match



environmentally  
friendly



natural  
origin



confirmed  
safety



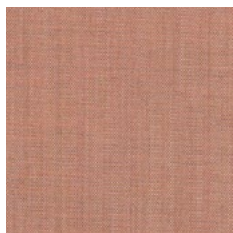


5

price group

# RX | Remix 3

by Kvadrat



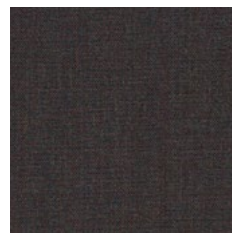
RX612



RX452



RX662



RX362



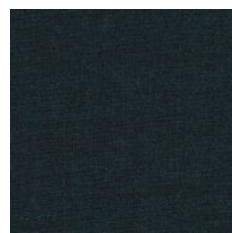
RX743



RX866



RX716



RX873



RX933



RX842



RX982



RX242



RX606



RX123



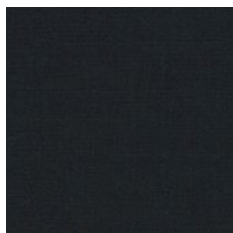
RX143



RX163



RX173



RX196

**EN** due to natural origin of the woolen yarn, minor slubs on the fabric may occur – this is not a flaw and does not affect the product quality

**PL** ze względu na naturalne pochodzenie przędzy wełnianej, na tkaninie mogą występować drobne zgrubienia - nie jest to wadą i nie ma wpływu na jakość produktu

**DE** Aufgrund der natürlichen Beschaffenheit des Wollgewebes kann es zu kleinen Fadenverdickungen auf dem Stoff kommen – dies ist kein Mangel und beeinträchtigt nicht die Produktqualität

**FR** vu l'origine naturelle des fils de laine, des grosseurs mineures peuvent apparaître sur le tissu - ceci ne constitue pas un défaut et n'impacte pas la qualité du produit

[GO TO INDEX](#)

[SPECIFICATION](#)



cigarette & match



high abrasion resistance



confirmed safety



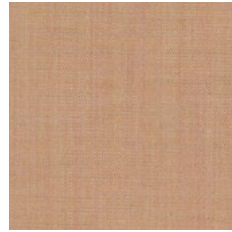
environmentally friendly



RX113



RX516



RX406



RX326



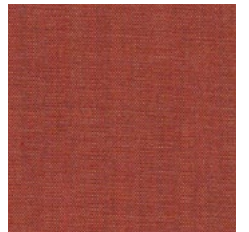
RX536



RX543



RX643



RX632



RX443



RX653



RX566



RX692



RX383



RX682



RX686



RX816



RX762



RX823



RX906



RX266



RX733



RX836



RX753



RX773



cigarette & match



high abrasion resistance



confirmed safety



environmentally friendly

SPECIFICATION

GO TO INDEX

# RX | Remix 3

by Kvadrat

EXTENDED

5



RX223



RX923



RX912



RX942



RX412



RX962



RX954



RX252



RX433



RX422



RX346



RX233



RX672



RX356



RX373



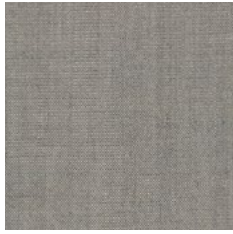


# RX | Remix 3

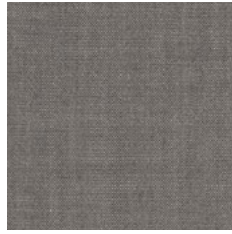
by Kvadrat

EXTENDED

5



RX126



RX136



RX722



RX133



RX276



RX152



RX852



RX973



RX996



RX286



RX796



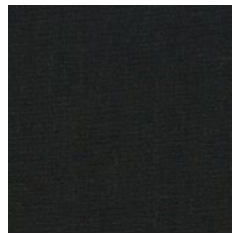
RX183



RX783



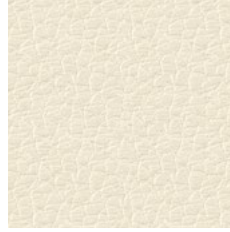
RX296



RX393



## SD | Fine Leather



SD06



SD15



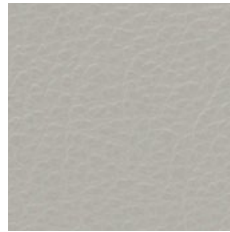
SD08



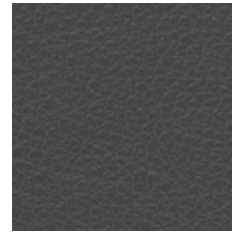
SD16



SD09



SD18



SD19



SD01

SPECIFICATION

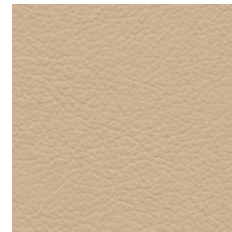


cigarette  
& match



natural  
origin

## LE | Fine Leather



LE06



LE01

- EN \* front of the chair - Fine Leather SD/LE, back - Imitation Leather V, in matching colours
- PL \* przód krzesła - Fine Leather SD/LE, tył - Imitation Leather V, w pasujących do siebie kolorach
- DE \* Vorderseite der Stühle in Fine Leather SD/LE, Rückseite der Stühle in Imitation Leather V in identischen Farben
- FR \* partie avant du siège en Fine Leather SD/LE, partie arrière en Imitation Leather V de la couleur correspondante



cigarette  
& match



natural  
origin

SPECIFICATION

GO TO INDEX





price group



NAP10002



NAP10043



NAP10031



NAP10033



NAP10021



NAP10019



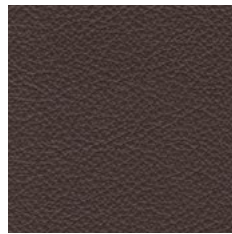
NAP10026



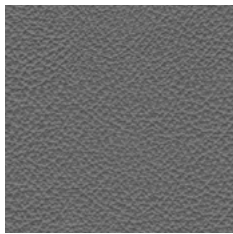
NAP10036



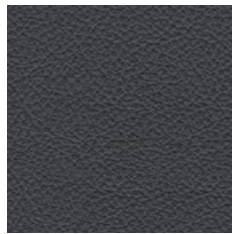
NAP10009



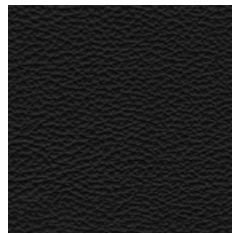
NAP10039



NAP10028



NAP10029



NAP10001



AN4607



AN4671



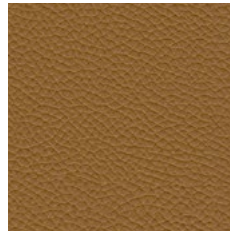
AN5215



AN5122



AN5885



AN3227



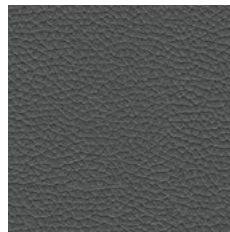
AN2334



AN5044



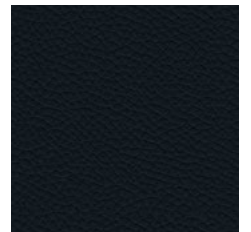
AN1463



AN1227



AN5180



AN5365



Cigarette & Match



Natural origin

SPECIFICATION

GO TO INDEX



Other

## AX | Mesh

for Xilium



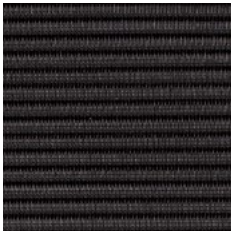
AX01



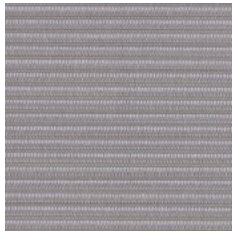
AX02

## WX | Mesh

for Xilium



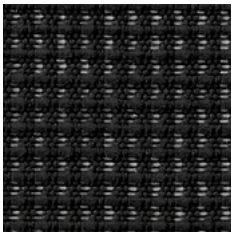
WX01



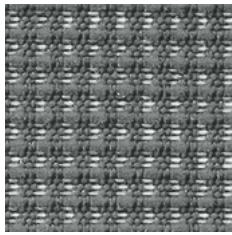
WX02

## MX | Mesh

for Xenium

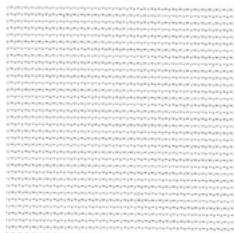


XNSW

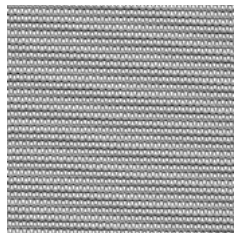


XNGR

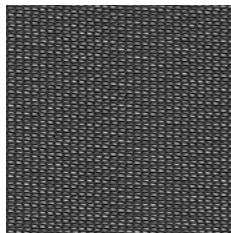
# OP | Mesh



OP20



OP25

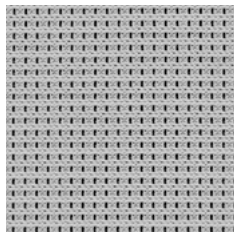


OP24N

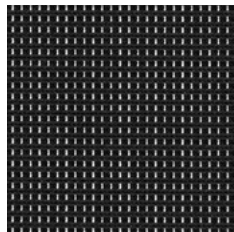
- EN Mesh OP for selected chairs, details in price lists
- PL Mesh OP do wybranych krzeseł, szczegóły w cennikach
- DE Mesh OP für ausgewählte Stühle, Details in den Preislisten
- FR Mesh OP uniquement pour les sièges sélectionnés, pour plus d'informations veuillez vous reporter aux tarifs publics

# MF | Mesh

for Navigo



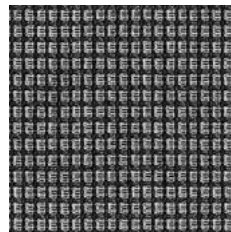
MF02



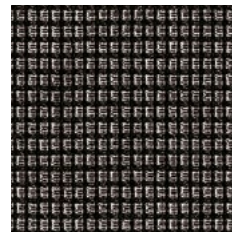
MF01

# NTS | Mesh

for Sail

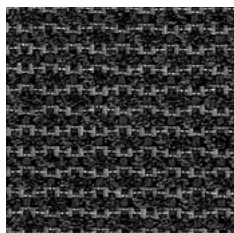


NTS02

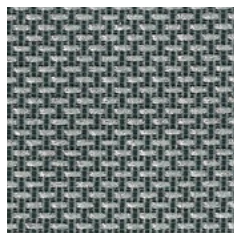


NTS01

# KR.4921 | Mesh



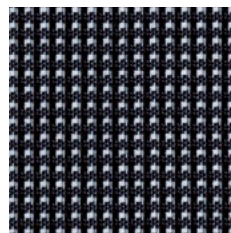
KR.  
4921.10



KR.  
4921.16

# Mesh

for Papilio



KR.4716.10

- EN Mesh KR.4921 for selected chairs, details in price lists
- PL Mesh KR.4921 do wybranych krzeseł, szczegóły w cennikach
- DE Mesh KR.4921 für ausgewählte Stühle, Details in den Preislisten
- FR Mesh KR.4921 uniquement pour les sièges sélectionnés, pour plus d'informations veuillez vous reporter aux tarifs publics

SPECIFICATION

GO TO INDEX

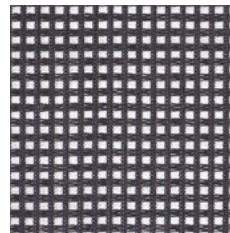
# Mesh



PX01

# Mesh

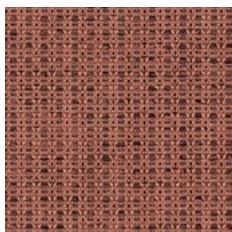
for @-Motion / Net Motion



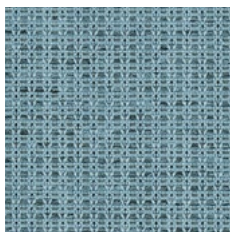
PX02

- EN Mesh PX01 for selected chairs, details in price lists
- PL Mesh PX01 do wybranych krzeseł, szczegóły w cennikach
- DE Mesh PX01 für ausgewählte Stühle, Details in den Preislisten
- FR Mesh PX01 uniquement pour les sièges sélectionnés, pour plus d'informations veuillez vous reporter aux tarifs publics

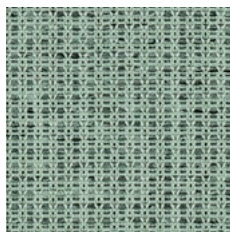
# MT | Mesh



MT64210



MT66185



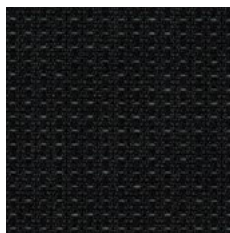
MT67089



MT60122



MT60123



MT60999

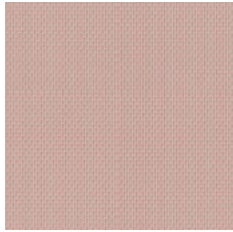
- EN Mesh MT for selected chairs, details in price lists
- PL Mesh MT do wybranych krzeseł, szczegóły w cennikach
- DE Mesh MT für ausgewählte Stühle, Details in den Preislisten
- FR Mesh MT uniquement pour les sièges sélectionnés, pour plus d'informations veuillez vous reporter aux tarifs publics

[GO TO INDEX](#)

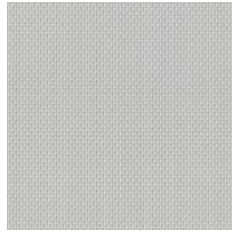
[SPECIFICATION](#)

# MV | Mesh

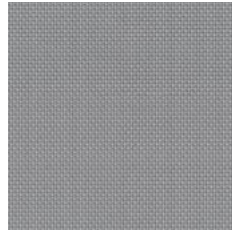
for Souly



MV1501  
Pink



MV1001  
Light Grey



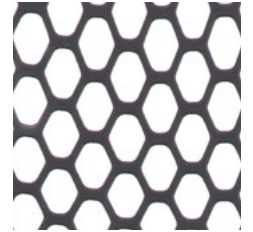
MV1201  
Grey

# Elasto-net

for YouTEAM™

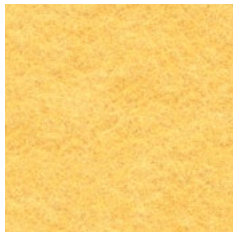


Pearl White PW



Black Grey SG

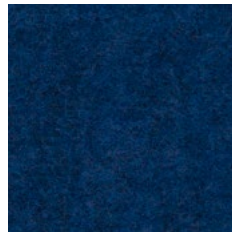
# Felt



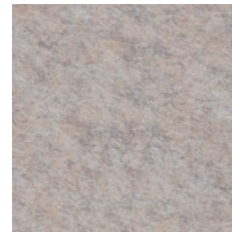
FC08  
Yellow



FC09  
Green



FC10  
Blue



FC05  
Sand Grey



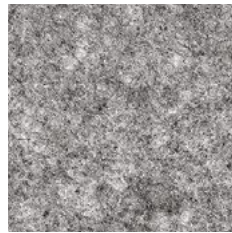
FK01  
Anthracite



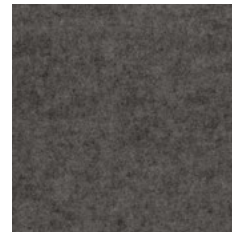
FC03  
Beige Grey



FC07  
Beige



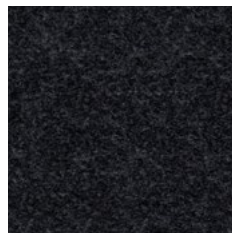
FC02  
Light Grey



FC01  
Grey



FC06  
Grey Melange



FC04  
Dark Grey



Cigarette  
& Match



Recycled  
origin

# Leather

for Offa handles



CL  
Cognac

SPECIFICATION

GO TO INDEX

# Metal



**RAL 1024**  
Ochre Yellow  
OY



**RAL 030 50 40**  
Vermilion Red  
VR



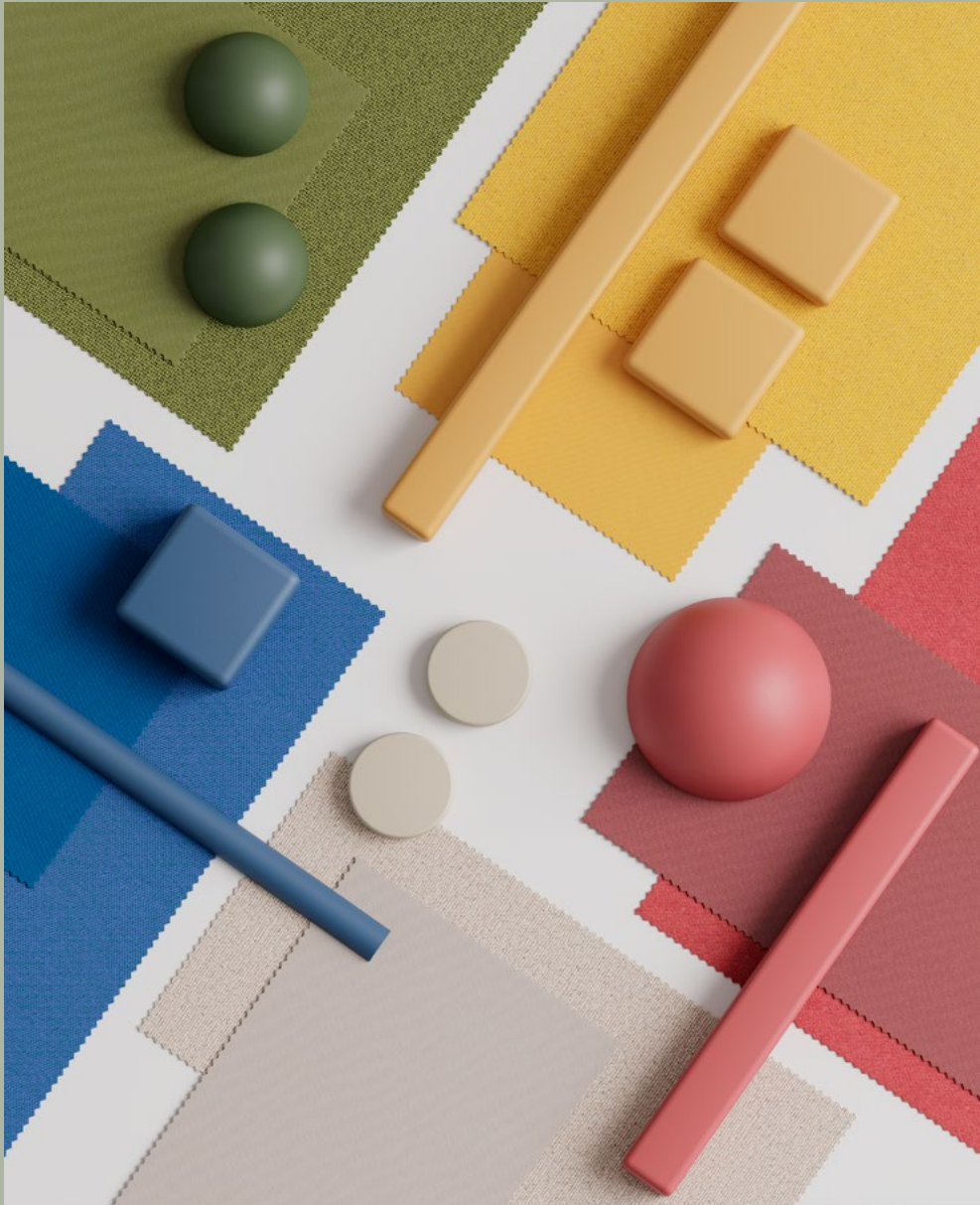
**RAL 6003**  
Olive Green  
OG



**RAL 5000**  
Violet Blue  
VB

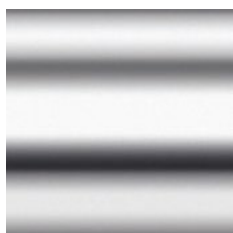


**NCS S 2005-Y60R**  
Cashmere  
NK



# Metal

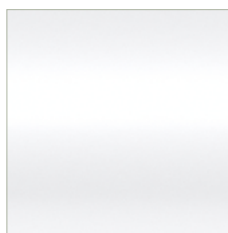
for Nowy Styl



**Chrome**  
CR, Z



**Polished Aluminium**  
POL



**RAL 9016**  
Traffic White  
BI, WT, W



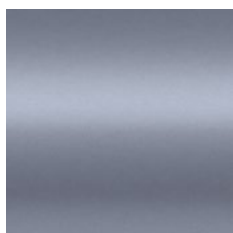
**RAL 9010**  
Pure White  
BI, WH, W



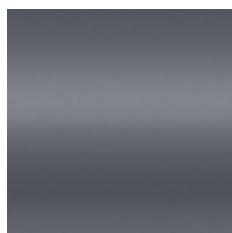
**RAL 9006**  
White Aluminium  
AL, ALU, WA, X



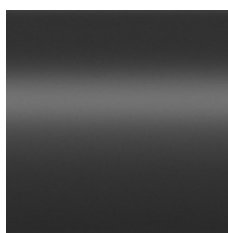
**Stainless Steel**  
STS



**RAL 7015**  
Slate Grey  
GY



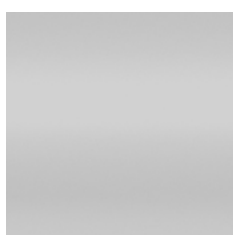
**RAL 7016**  
Anthracite Grey  
AH



**RAL 9005**  
Jet Black  
CZ, BL, Y



**RAL 7021**  
Black Grey  
GF



**Natural Anode**  
AN



**Black Matt Anode**  
CZ, BLN

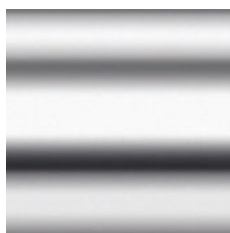


**RAL 3002**  
Carmine Red  
(only for  
Xilium G base)

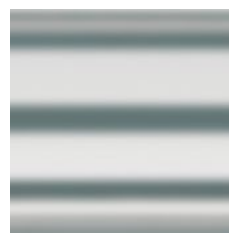


**RAL 5023**  
Distant Blue  
(only for  
Xilium G base)

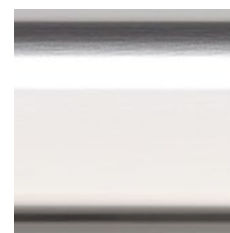
for Kusch+Co



**Chrome**  
CR



**Satin Chrome**  
SCR



**Polished Aluminium**  
POL



**Anodised Aluminium Silver matt**  
ASAM



**Anodised Aluminium Silver bright**  
ASAG



**RAL 9003**  
Signal White  
WS



**RAL 9016**  
Traffic White  
WT



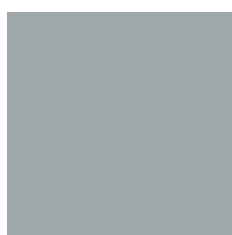
**Silk**  
KSK



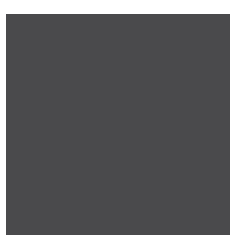
**Silver 98**  
SV



**RAL 9006**  
White Aluminium  
WK



**Silver Aluminium**  
SA



**DB 703**  
Iron Mica  
IM



**RAL 9011**  
Graphite Black  
BLK, CZ



**RAL 9005**  
Jet Black  
BK



**Stainless Steel**  
STS



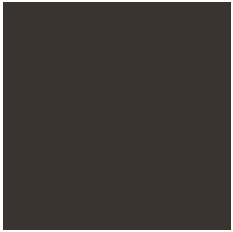
**Natural Anode**  
AN



**Black Matt Anode**  
AC

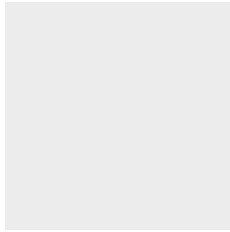
# Plastic

for Passu



**KS01**

for Yuni



**PP00**  
White



**PP40J**  
Crimson Red

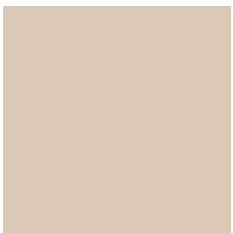


**PP62H**  
Cyan Blue



**PP25J**  
Warm Gray

for Inta



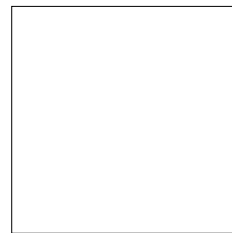
**CE**  
Cream



**PR**  
Powder

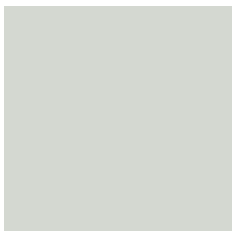


**B**  
Black



**W**  
White

for Amigo, Beta, Cortina, Iso, Polyfold



**K-32**



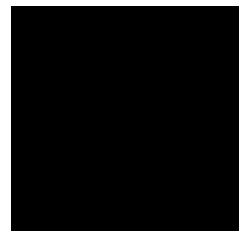
**K-31**



**K-59**



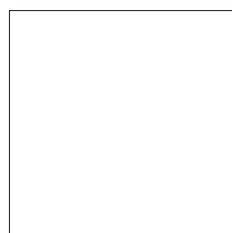
**K-05**



**K-02**

# Plastic

for Calado



CPP01



CPP30

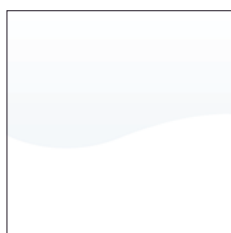


CPP32



CPP02

for Fondo



Gloss White



Gloss Red



Gloss Orange



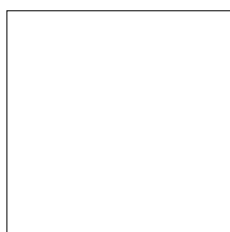
Gloss Lime Green



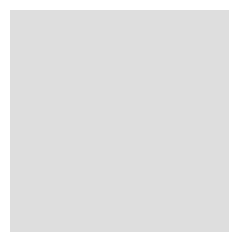
Gloss Anthracite

## Plastic elements

for office chairs (e.g. backrest frames and covers, bases, armrest elements etc.)



White  
W



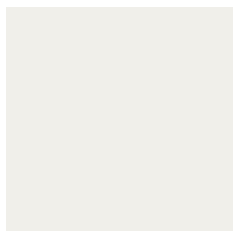
Light Grey  
G



Black  
B

# Plastic

for iHola!



**KW**  
Signal White



**KA**  
Salem



**KE**  
Pimento



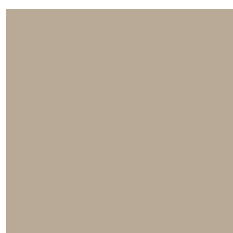
**KL**  
Midnight Blue



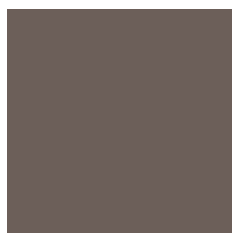
**KC**  
Scampolo



**KT**  
Tinkerbell



**KK**  
Silk



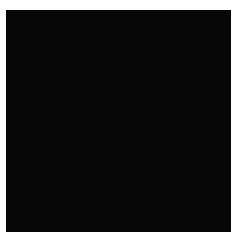
**KQ**  
Quartz Grey



**KY**  
Light Grey



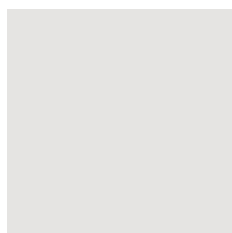
**KG**  
Black Grey



**KB**  
Black

# Plastic

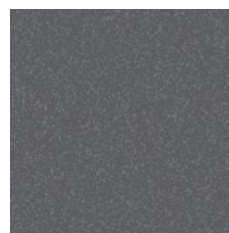
for Paxo



**KWT**  
Traffic White



**KR**  
Reed Green

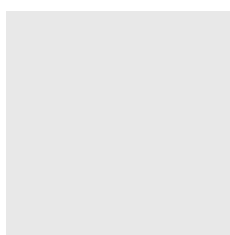


**KS**  
Silver



**KB**  
Black

for Volpino



**KWT**  
Traffic White

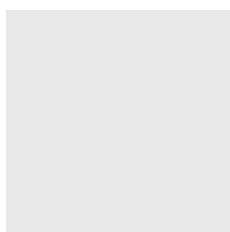


**KKG**  
Silk Grey



**KF**  
Graphite

for uni\_verso



**KI**  
Arctic



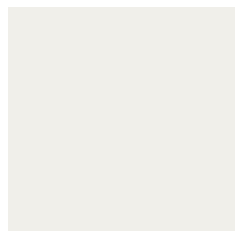
**KKF**  
Flax Silk



**KO**  
Stone

# Plastic

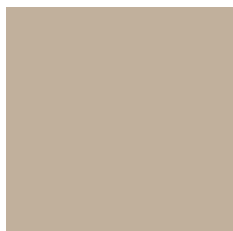
for Arn



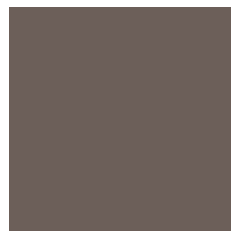
**KW**  
Signal White



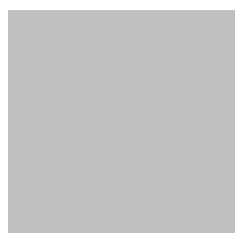
**KT**  
Tinkerbell



**KK**  
Silk



**KQ**  
Quartz Grey

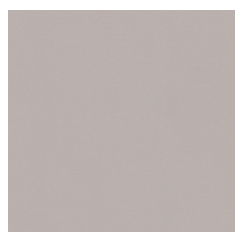


**KY**  
Light Grey



**KG**  
Black Grey

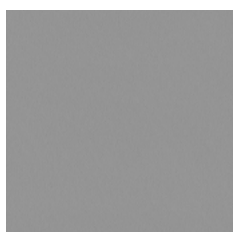
for V-Care armrests



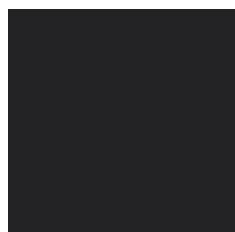
**KKB**  
Blush Silk



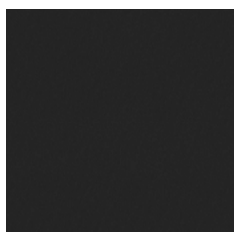
**PE**  
Purple Red



**PY**  
Platinum Grey



**KB**  
Black



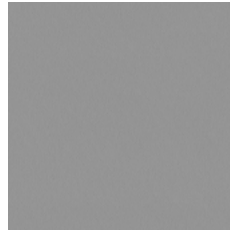
**KG**  
Black Grey

# Polyurethane

for V-Care seat shell



**KKB**  
Blush Silk



**PY**  
Platinum Grey



**PE**  
Purple Red



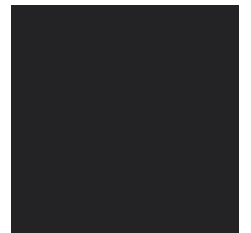
**KG**  
Black Grey

for Terminal



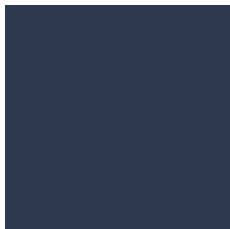
**KB**  
Black

for 8000

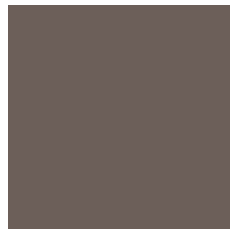


**KB**  
Black

for V-Travel



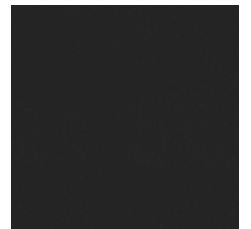
**KZ**  
Grey Blue



**KQ**  
Quartz Grey



**KX**  
Grey Brown



**KG**  
Black Grey

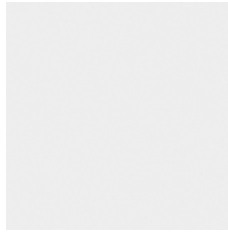
# Laminate for chairs



**H3349**  
Kaisersberg Oak



**H1733**  
Mainau Birch



**W1000**  
Premium White



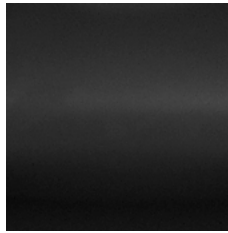
**U708**  
Light Grey



**U626**  
Kiwi Green



**U504**  
Tyrolean Blue



**U999**  
Black

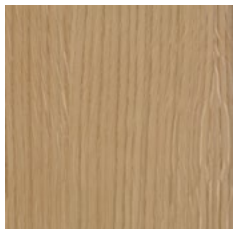


**U963**  
Dark Grey

**EN** for chairs, armrest pads and writing tablets  
**PL** do krzeseł, nakładek podłokietników i pulpitów  
**DE** für Stühle, Armauflagen und Schreibtislar  
**FR** pour sièges, accoudoirs et tablettes

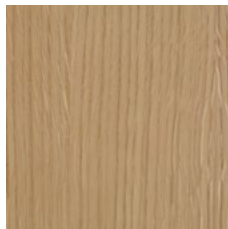
# Veneer for chairs

for Nowy Styl



**2.D07**  
Oak

for Kusch+Co



**SKNO**  
Natural Oak

# Wood (natural stained)



**2.09S**  
White



**2.0CB**  
Acacia



**SK40**  
Oak



**2.0CC**  
Walnut



**S39**  
Light Grey

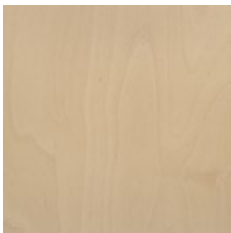


**2.06S**  
Slate

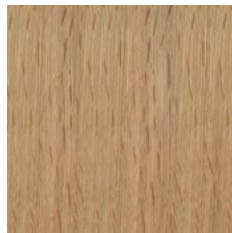


**2.07Y**  
Black

## Wood (natural lacquered) for Nowy Styl

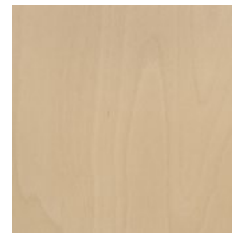


**1.007** Beech OC



**2.D07** Oak OA

## Wood (natural lacquered) for Kusch+Co

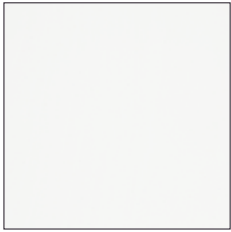


**SKNB**  
Natural Beech

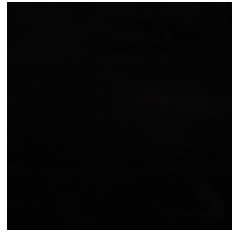


**SKNO**  
Natural Oak

# Enamels



3.093 White Beech,  
3.0A8 White



3.097 Black Beech,  
3.097 Black

# Veneer for furniture

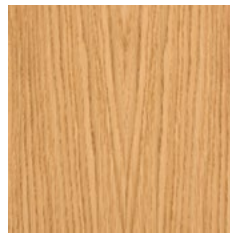
for Nowy Styl



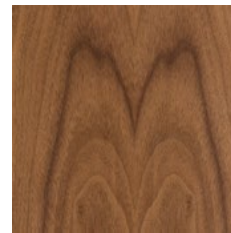
VN White Ash



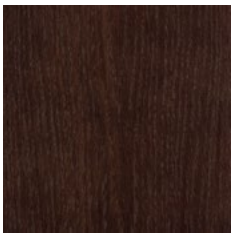
VT Natural Beech



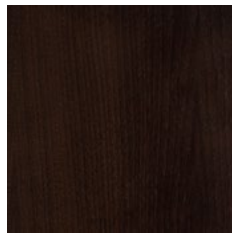
DM Natural Oak



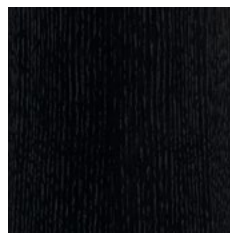
VS Natural  
American Walnut



VM Brown Oak



VP Brown  
American Walnut



VO Black Oak

# Veneer for furniture

for Kusch+Co



**KBU**  
Beech

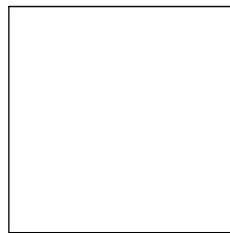


**KEI**  
Oak



**KNB**  
Walnut

# Lacquered MDF



**RAL 9003**  
Signal White  
FI



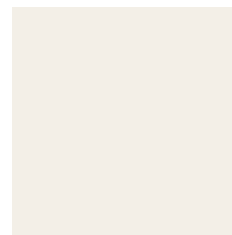
**RAL 7012**  
Basalt Grey  
FS



**RAL 7021**  
Black Grey  
FG



**RAL 6018**  
Yellow Green



**RAL 9016**  
Traffic White

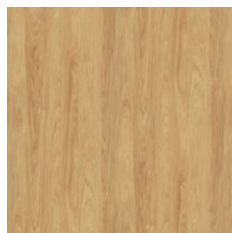


**RAL 7015**  
Slate Grey

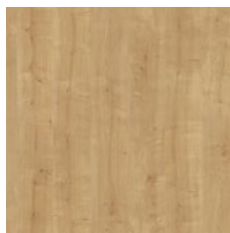
# Melamine | Laminate



**NJ Acacia Light**  
GN Acacia Light<sup>1</sup>



**NZ Natural Hickory**  
HZ Natural Hickory<sup>1</sup>



**HO Hamilton Oak**  
KU Hamilton Oak<sup>1</sup>



**ML Kaisersberg  
Oak**



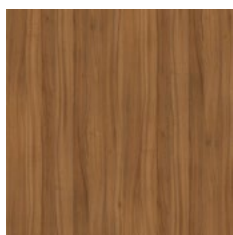
**NH Maple**



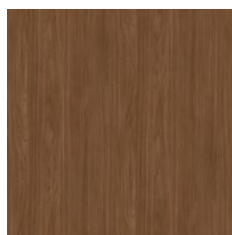
**MM Ellmau Beech**



**MG Grey Vicenza  
Oak**



**NW Natural Dijon  
Walnut**



**LW Lincoln Walnut**  
KT Lincoln Walnut<sup>1</sup>



**CW Black  
Graphite**

**EN** for furniture, soft seating elements, table tops and writing tablets  
**PL** do mebli, elementów soft seating, blatów i pulpitów  
**DE** für Möbel, Elemente der Soft Seating Lösungen, Tischplatten und Schreibtislar  
**FR** pour mobilier, éléments de canapés, plateaux de tables et tablettes écriroires

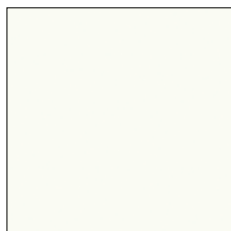
**EN** melamine faced chipboard (MFC), class E1  
**PL** płyta meblowa dwustronnie melaminowana, klasa E1  
**DE** Beidseitig melaminbeschichtete Spanplatte der Güteklasse E1  
**FR** panneau de particules mélaminé double face, de la classe E1

**EN** selected colours of melamine available for selected furniture lines and their elements; details in price lists  
**PL** wybrane kolory melamin dostępne dla wybranych linii meblowych i ich elementów; szczegóły w cennikach  
**DE** ausgewählte Melaminfarben sind für bestimmte Möbellinien und dazugehörige Elemente verfügbar; Details in den Preislisten  
**FR** coloris de mélamine sélectionnés, disponibles pour certains systèmes de mobilier et leurs éléments; pour plus d'informations, veuillez vous reporter aux tarifs publics

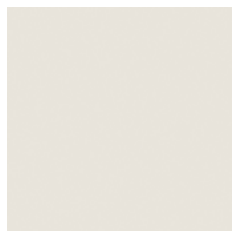
**EN** <sup>1</sup> laminate colour matching melamine colour  
**PL** <sup>1</sup> kolor laminatu odpowiada kolorowi melaminy  
**DE** <sup>1</sup> die Melaminoberflächen sind identisch mit genannten Laminatoberflächen  
**FR** <sup>1</sup> coloris de finitions en stratifié correspondant aux coloris de mélamines



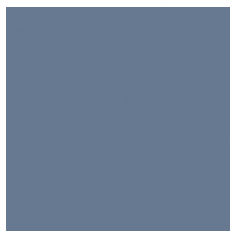
# Melamine | Laminate



**BI White**  
CA White<sup>1</sup>



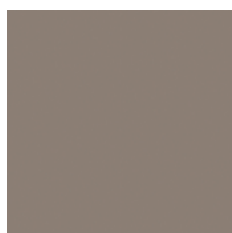
**MB White Grey**  
FN White Grey<sup>1</sup>



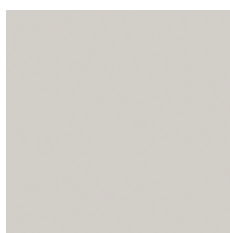
**ST Smoke Blue**



**NK Cashmere**



**BA Truffle Grey**



**MP Platinum**  
BW Platinum<sup>1</sup>



**MS Slate**  
GW Slate<sup>1</sup>



**CC Black**  
DD Black<sup>1</sup>

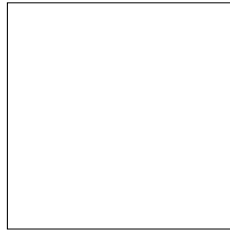
**EN** for furniture, soft seating elements, table tops and writing tablets  
**PL** do mebli, elementów soft seating, blatów i pulpitów  
**DE** für Möbel, Elemente der Soft Seating Lösungen, Tischplatten und Schreibtäbale  
**FR** pour mobilier, éléments de canapés, plateaux de tables et tablettes écritaires

**EN** melamine faced chipboard (MFC), class E1  
**PL** płyta meblowa dwustronnie melaminowana, klasa E1  
**DE** Beidseitig melaminbeschichtete Spanplatte der Güteklasse E1  
**FR** panneau de particules mélaminé double face, de la classe E1

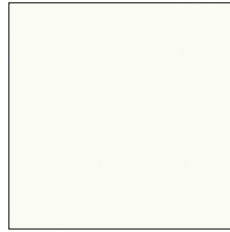
**EN** selected colours of melamine available for selected furniture lines and their elements; details in price lists  
**PL** wybrane kolory melamin dostępne dla wybranych linii meblowych i ich elementów; szczegóły w cennikach  
**DE** ausgewählte Melaminfarben sind für bestimmte Möbellinien und dazugehörige Elemente verfügbar; Details in den Preislisten  
**FR** coloris de mélamine sélectionnés, disponibles pour certains systèmes de mobilier et leurs éléments; pour plus d'informations, veuillez vous reporter aux tarifs publics

**EN** <sup>1</sup> laminate colour matching melamine colour  
**PL** <sup>1</sup> kolor laminatu odpowiada kolorowi melaminy  
**DE** <sup>1</sup> die Melaminoberflächen sind identisch mit genannten Laminatoberflächen  
**FR** <sup>1</sup> coloris de finitions en stratifié correspondant aux coloris de mélamines

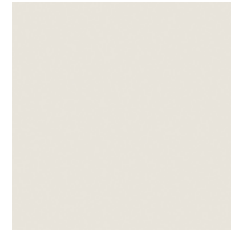
# Laminate | Melamine for furniture



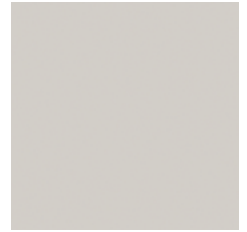
**FU White Gloss**  
(whiteboard)<sup>2</sup>



**CA White**  
BI White<sup>1</sup>



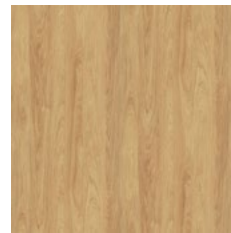
**FN White Grey**  
MB White Grey<sup>1</sup>



**BW Platinum**  
MP Platinum<sup>1</sup>



**GN Acacia Light**  
NJ Acacia Light<sup>1</sup>



**HZ Natural Hickory**  
NZ Natural Hickory<sup>1</sup>



**KU Hamilton Oak**  
HO Hamilton Oak<sup>1</sup>



**KT Lincoln Walnut**  
LW Lincoln Walnut<sup>1</sup>



**DD Black**  
CC Black<sup>1</sup>



**GW Slate**  
MS Slate<sup>1</sup>

**EN** applies to selected elements of furniture systems, details in price lists  
**PL** dotyczy wybranych elementów systemów meblowych, szczegóły w cennikach  
**DE** für ausgewählte Elemente und Möbelsysteme erhältlich; Details in den Preislisten  
**FR** concerne les éléments sélectionnés de mobilier; pour plus d'informations, veuillez vous reporter aux tarifs publics

**EN** <sup>1</sup> laminate colour matching melamine colour  
**PL** <sup>1</sup> kolor laminatu odpowiada kolorowi melaminy  
**DE** <sup>1</sup> die Melaminoberflächen sind identisch mit genannten Laminatoberflächen  
**FR** <sup>1</sup> coloris de finitions en stratifié correspondant aux coloris de mélamines

**EN** <sup>2</sup> whiteboard laminate  
**PL** <sup>2</sup> laminat suchościernalny  
**DE** <sup>2</sup> Whiteboard-Laminatänke  
**FR** <sup>2</sup> stratifié tableau blanc



environmentally  
friendly



pressure  
resistant

GO TO INDEX

# Laminate for table tops

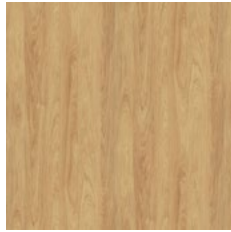
for Kusch+Co



**GN Acacia Light**  
NJ Acacia Light<sup>1</sup>



**HE Kaisersberg Oak**  
ML Kaisersberg Oak<sup>1</sup>



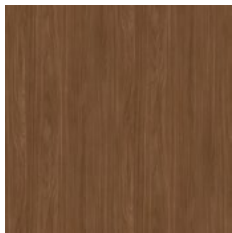
**HZ Natural Hickory**  
NZ Natural Hickory<sup>1</sup>



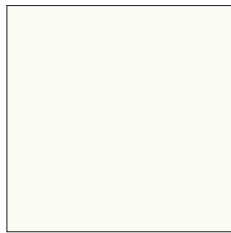
**HF Ellmau Beech**  
MM Elmau Beech<sup>1</sup>



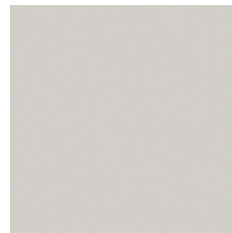
**FC Grey Vicenza Oak**  
MG Grey Vicenza Oak<sup>1</sup>



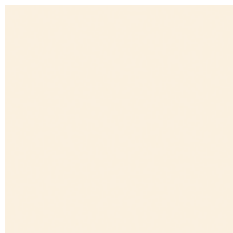
**KT Lincoln Walnut**  
LW Lincoln Walnut<sup>1</sup>



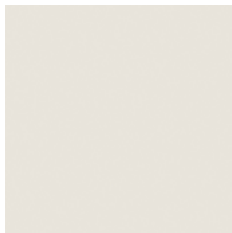
**CA White**  
BI White<sup>1</sup>



**BW Platinum**  
MP Patinum<sup>1</sup>



**AA Came Beige**



**FN White Grey**  
MB White Grey<sup>1</sup>



**HC Cashmere**  
NK Cashmere<sup>1</sup>



**GW Slate**  
MS Slate<sup>1</sup>

for Creva soft seating, Scorpii:



**DD Black**  
CC Black

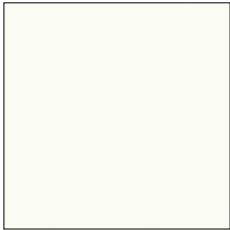
**EN** <sup>1</sup> laminate colour matching melamine colour

**PL** <sup>1</sup> kolor laminatu odpowiada kolorowi melaminy

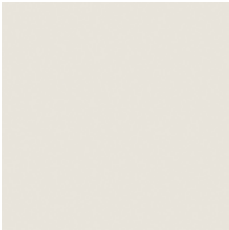
**DE** <sup>1</sup> die Melaminoberflächen sind identisch mit genannten Laminatoberflächen

**FR** <sup>1</sup> coloris de finitions en stratifié correspondant aux coloris de mélamines

# Laser edge ABS



**BI White**



**MB White Grey**



**MP Platinum**

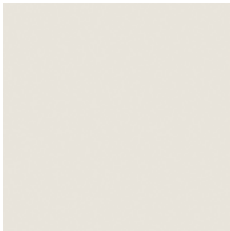


**NH Maple**

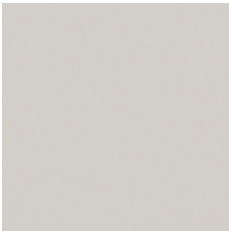


**NJ Acacia Light**

# Glued edge 3 mm



**MB White Grey**



**MP Platinum**



**ML Kaisersberg  
Oak**



**NH Maple**

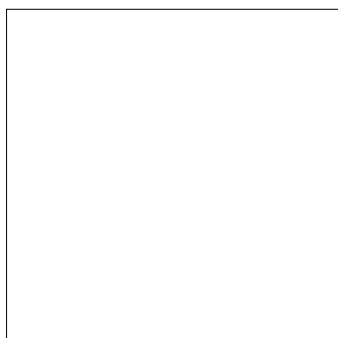


**NJ Acacia Light**



**MM Ellmau Beech**

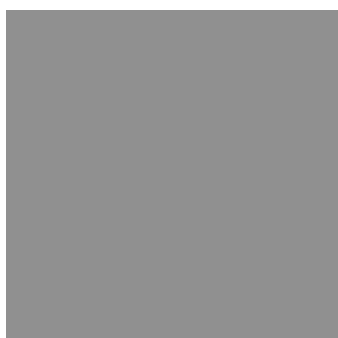
# Melamine for Organic Board



**IW**  
**Icy White**



**OL**  
**Lindberg Oak**



**YP**  
**Platinum Grey**

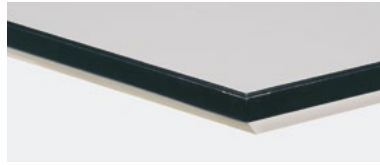


# Edge for table tops

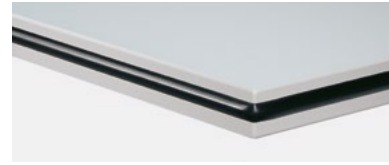
## HPL Laminate for Kusch+Co



**2 mm  
plastic**



**2 mm  
plastic on MDF,  
50 mm chamfered lipping**



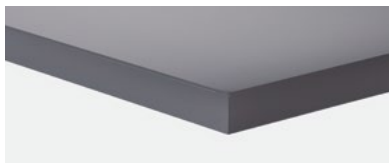
**2 mm  
plastic with protective edge**

## Melamine MFC for Kusch+Co

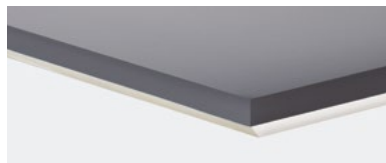


**2 mm  
plastic**

## Fenix NTM® for Kusch+Co



**1 mm  
plastic PP**



**1 mm  
plastic PP on MDF,  
50 mm chamfered lipping**

## Veneer for Kusch+Co



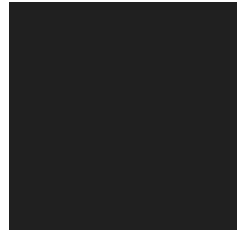
**2 mm  
natural wood**



**2 mm  
natural wood on MDF,  
50 mm chamfered lipping**

# Compact Laminate

for Kusch+Co tables in benches and writing tablets:

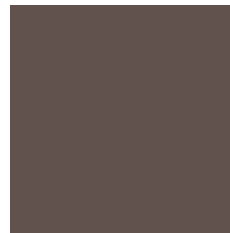


**U0901TP**  
**Traceless Black**

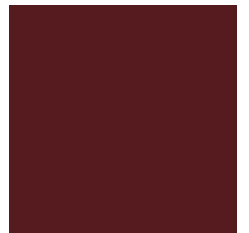
# Linoleum



**JP**  
**Pebble**



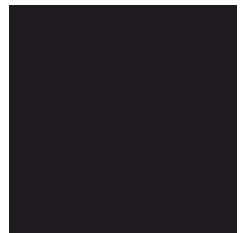
**JM**  
**Mauve**



**JB**  
**Burgundy**



**JS**  
**Smokey Blue**



**JC**  
**Charcoal**

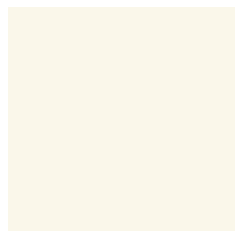
**EN** linoleum made from natural raw materials: linseed oil, resin, wood flour and natural dyes

**PL** linoleum wyprodukowane z surowców naturalnych: oleju lnianego, żywicy, mączki drzewnej i naturalnych barwników

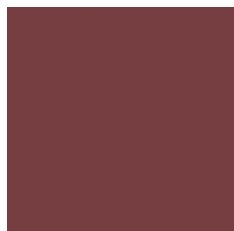
**DE** Linoleum wird aus nachwachsenden Rohstoffen gefertigt: Leinöl, Harz, Holzmehl sowie natürliche Farbpigmente

**FR** linoléum fabriqué à partir de matières premières naturelles : huile de lin, résine, farine de bois et pigments naturels

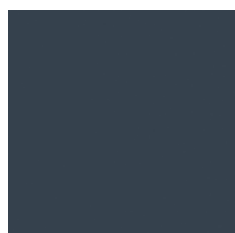
# Fenix NTM<sup>®</sup>



KS Bianco Kos



KP Rosso Jaipur



KO Blu Fes



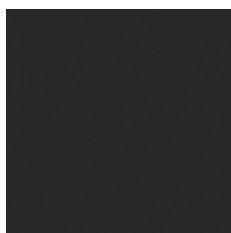
KR Verde  
Comodoro



KM Grigio Antrim

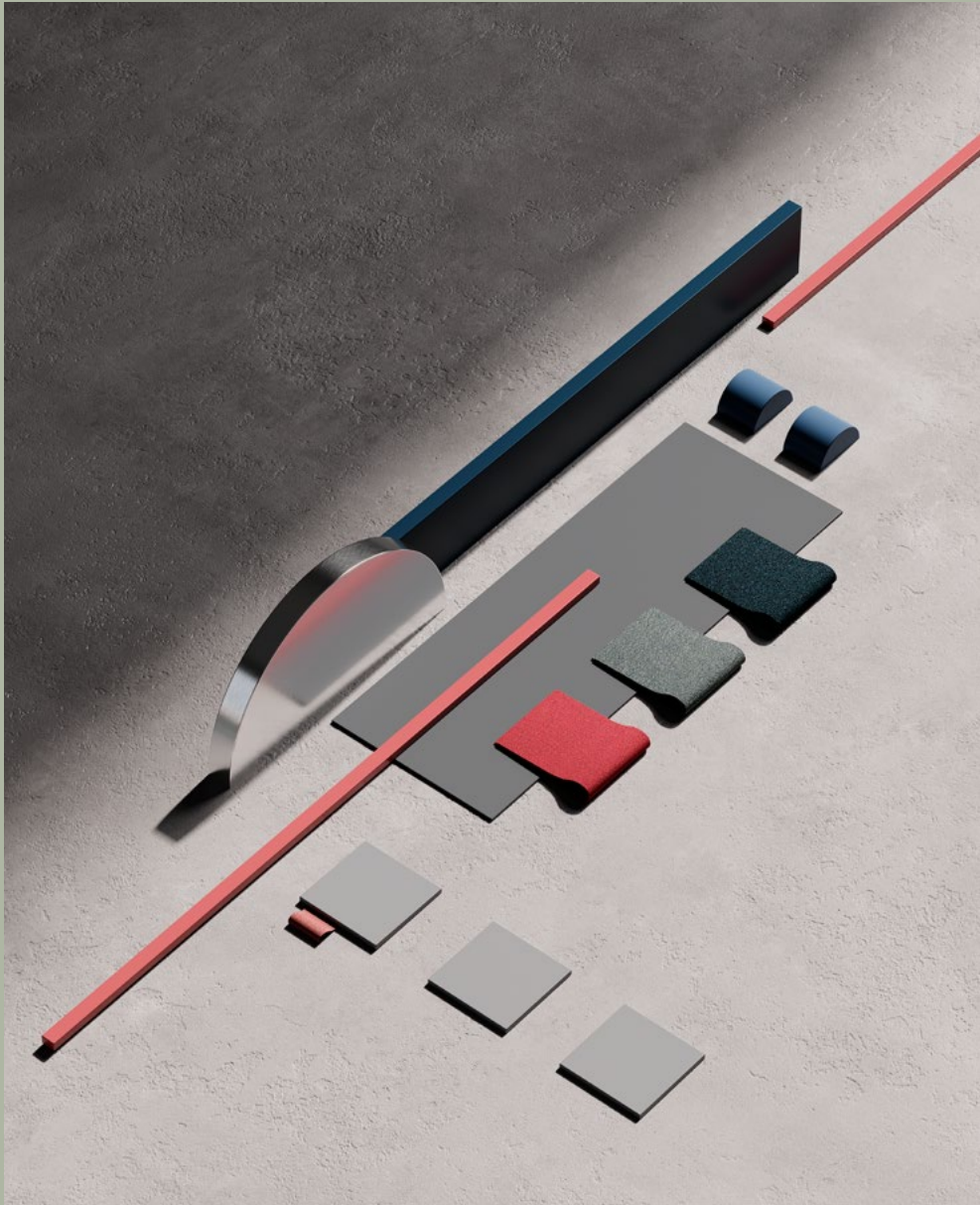


KN Grigio Bromo



KJ Nero Ingo

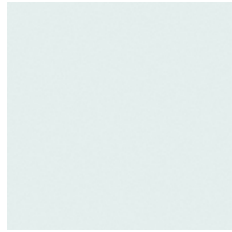




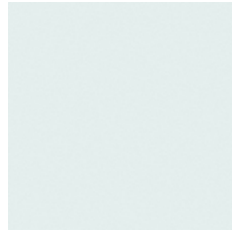
# Glass



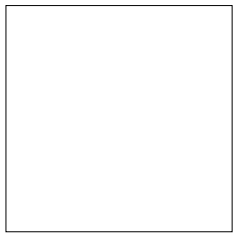
**Transparent Glass**



**Satino Glass**



**Matt Glass**



**RAL 9003  
Signal White SI**



**RAL 7012  
Basalt Grey SS**



**RAL 7021  
Black Grey SG**

[GO TO INDEX](#)



# Technical specifications

## Flammability

### General note:

Indicated flame retardant performance is dependent upon the combination of materials used in upholstered set (in combination with suitable combustion modified foams with appropriate density and sometimes use additional fire blocking insulation).

## Trudnozapalność

### Uwaga ogólna:

Wskazane właściwości trudnopalne zależą od połączenia materiałów użytych w zestawie tapicerowanym (w połączeniu z odpowiednimi piankami trudnopalnymi o właściwej gęstości, a czasem z zastosowaniem dodatkowej izolacji blokującej ogień).

## Brandschutznormen

### Allgemeiner Hinweis:

Die angegebenen flammhemmenden Eigenschaften hängen von der Kombination der im gepolsterten Satz verwendeten Materialien ab (in Kombination mit geeigneten flammhemmenden Schäumen entsprechendem Raumgewicht und manchmal unter Verwendung einer zusätzlichen feuerhemmenden Isolierung).

## Résistance au feu

### Remarque générale :

Les propriétés ignifuges indiquées dépendent de la combinaison des matériaux utilisés dans le lot tapissé (en association avec des mousses ignifuges adaptées d'une densité appropriée, et parfois avec l'utilisation d'une isolation coupe-feu supplémentaire).

# Technical specifications

	Lars   LAR	Basic Fabric   C
Price group: Grupa cenowa: Preisgruppe: Groupe de prix :	0	0
Composition: Skład: Material: Composition :	100% polyester poliester Polyester polyester	100% polyester poliester Polyester polyester
Weight: Gramatura: Gewicht: Poids :	240 gr/m <sup>2</sup> ±5%	270 g/m <sup>2</sup>
Abrasion resistance (Martindale cycles): Odporność na ścieranie (cykle Martindale): Scheuerfestigkeit (Touren Martindale): Résistance à l'abrasion (cycles Martindales) :	>300 000	90 000
Colour fastness to light: Odporność barwy na światło: Lichtechtheit: Résistance de la couleur à la lumière :	EN ISO 105-B02 (4)	EN ISO 105-B02 (6-7)
Colour fastness to rubbing: Odporność barwy na tarcie: Reibechtheit: Résistance de la couleur au frottement:	EN ISO 105-X12 (wet: 4-5 / dry: 4-5)	EN ISO 105-X12 (wet: 4-5 / dry: 4-5)
Pilling: Odporność na pilling: Pilling: Résistance au boulochage :	EN ISO 12945-2 (4)	EN ISO 12945-2 (4-5)
Flammability: Trudnozapalność: Brandschutznormen: Résistance au feu :	EN 1021-1	-
Other: Inne: Sonstiges: Autres :	Oeko-Tex® Standard 100 certificate	-

# Technical specifications

Imitation Leather   V	Micro   M
	
100% PVC coated polyester poliester pokryty warstwą PCV PVC-beschichtetes Polyestergewebe polyester enduit PVC	100% polyester poliester Polyester polyester
460 g/m <sup>2</sup>	160 g/m <sup>2</sup>
>70 000	50 000
-	-
EN ISO 105-X12 (wet: 4-5 / dry: 4)	-
-	-
EN 1021-1, EN 1021-2, applies to colours marked with N symbol dotyczy kolorów oznaczonych symbolem N gilt für Farben mit „N“- Kennzeichnung coloris marqués N sont non-inflammables	EN 1021-1, EN 1021-2
easy to keep clean łatwy w utrzymaniu czystości einfach zu reinigen facile à nettoyer	EN 71-1 safety of toys (mechanical and physical properties) bezpieczeństwo zabawek (właściwości mechaniczne i fizyczne) Sicherheit von Spielzeug w(mechanische und physikalische Eigenschaften) sécurité des jouets (propriétés mécaniques et physiques)  EN 71-2 safety of toys (flammability) bezpieczeństwo zabawek (palność) Sicherheit von Spielzeug (Entflammbarkeit) sécurité des jouets (inflammabilité)  EN 71-3 safety of toys (migration of certain elements) bezpieczeństwo zabawek (migracja określonych pierwiastków) Sicherheit von Spielzeug (Migration bestimmter Elemente) sécurité des jouets (migration de certains éléments)

# Technical specifications

	Bondai   BN	Era   CSE
Price group: Grupa cenowa: Preisgruppe: Groupe de prix :	①	①
Composition: Skład: Material: Composition :	100% polyester poliester Polyester polyester	100% polyester, non metallic dyestuffs poliester, nie zawiera pigmentów metalicznych Polyester, nicht schwermetallhaltige Farbstoffe polyester, teintures non métalliques
Weight: Gramatura: Gewicht: Poids :	250 g/m <sup>2</sup>	320 g/m <sup>2</sup> ±5%
Abrasion resistance (Martindale cycles): Odporność na ścieranie (cykle Martindale): Scheuerfestigkeit (Touren Martindale): Résistance à l'abrasion (cycles Martindales) :	150 000	≥100 000
Colour fastness to light: Odporność barwy na światło: Lichtechtheit: Résistance de la couleur à la lumière :	EN ISO 105-B02 (6)	EN ISO 105-B02 (5)
Colour fastness to rubbing: Odporność barwy na tarcie: Reibechtheit: Résistance de la couleur au frottement:	EN ISO 105-X12 (wet: 4-5 / dry: 4-5)	-
Pilling: Odporność na pilling: Pilling: Résistance au boulochage :	EN ISO 12945-2 (5)	-
Flammability: Trudnozupalność: Brandschutznormen: Résistance au feu :	EN 1021-1, EN 1021-2, BS 5852 Crib 5, BS 7176 medium hazard Calif. Bull. 117E	EN 1021-1, EN 1021-2 BS 7176 low hazard
Other: Inne: Sonstiges: Autres :	OEKO-TEX® STANDARD 100 certificate  Bondai fabric is compliant with the criteria of the Möbelfakta certification.	OEKO-TEX® STANDARD 100 certificate Indoor Advantage™ certificate (Gold) Environmental Product Declaration - Synthetic fabric composition  Era fabric is compliant with the criteria of the Möbelfakta certification.

# Technical specifications

Oflum   OL	Sempre   SM
	
100% polyester poliester Polyester polyester	100% polyester poliester Polyester polyester
$310 \pm 12 \text{ g/m}^2$	$366 \pm 15 \text{ g/m}^2$
150 000	$\geq 200\ 000$
EN ISO 105-B02 (5-6)	EN ISO 105-B02 (6)
EN ISO 105-X12 (wet: 5 / dry: 5)	EN ISO 105-X12 (wet: 5 / dry: 5)
EN ISO 12945-2 (4-5)	EN ISO 12945-2 (5)
EN 1021-1, EN 1021-2	EN 1021-1, EN 1021-2
EU Ecolabel certificate OEKO-TEX® STANDARD 100 certificate	EU Ecolabel certificate OEKO-TEX® STANDARD 100 certificate

# Technical specifications

	Sempre Melange   SMM	Oban   EF
Price group: Grupa cenowa: Preisgruppe: Groupe de prix :	①	①
Composition: Skład: Material: Composition :	100% polyester poliester Polyester polyester	100% polypropylene polipropylen Polypropylen polypropylène
Weight: Gramatura: Gewicht: Poids :	375 ± 15 g/m <sup>2</sup>	230 g/m <sup>2</sup> ±5%
Abrasion resistance ( <i>Martindale cycles</i> ): Odporność na ścieranie ( <i>cykle Martindale</i> ): Scheuerfestigkeit ( <i>Touren Martindale</i> ): Résistance à l'abrasion ( <i>cycles Martindales</i> ) :	120 000	≥30 000
Colour fastness to light: Odporność barwy na światło: Lichtechtheit: Résistance de la couleur à la lumière :	EN ISO 105-B02 (6)	EN ISO 105-B02 (min. 5)
Colour fastness to rubbing: Odporność barwy na tarcie: Reibechtheit: Résistance de la couleur au frottement:	EN ISO 105-X12 (wet: 5 / dry: 5)	-
Pilling: Odporność na pilling: Pilling: Résistance au boulochage :	EN ISO 12945-2 (5)	-
Flammability: Trudnozupalność: Brandschutznormen: Résistance au feu :	EN 1021-1, EN 1021-2	EN 1021-1
Other: Inne: Sonstiges: Autres :	EU Ecolabel certificate OEKO-TEX® STANDARD 100 certificate	-

# Technical specifications

Lucia | YB

1

100%  
recycled polyester, non metallic dyestuffs  
poliester pochodzący z recyklingu, nie zawiera pigmentów metalicznych  
recycltes Polyester, nicht schwermetallhaltige Farbstoffe  
polyester recyclé, teintures non métalliques

260 g/m<sup>2</sup> ±5%

50 000

EN ISO 105-B02  
(6)

-

-

EN 1021-1, EN 1021-2  
BS 7176 low hazard

EU Ecolabel certificate  
OEKO-TEX® STANDARD 100 certificate  
Indoor Advantage™ certificate (Gold)  
Environmental Product Declaration - Synthetic fabric composition

[GO TO INDEX](#)

# Technical specifications

	Urban   YN
Price group: Grupa cenowa: Preisgruppe: Groupe de prix :	2
Composition: Skład: Material: Composition :	100% post-consumer recycled polyester, non metallic dyestuffs poliester pochodzący z recyklingu użytkowego (post-consumer), nie zawiera pigmentów metalicznych recycltes Post-Consumer-Polyester, nicht schwermetallhaltige Farbstoffe polyester recyclé post-consommation, teintures non métalliques recycltes
Weight: Gramatura: Gewicht: Poids :	340 g/m <sup>2</sup> ±5%
Abrasion resistance ( <i>Martindale cycles</i> ): Odporność na ścieranie ( <i>cykle Martindale</i> ): Scheuerfestigkeit ( <i>Touren Martindale</i> ): Résistance à l'abrasion ( <i>cycles Martindales</i> ) :	≥100 000
Colour fastness to light: Odporność barwy na światło: Lichtechtheit: Résistance de la couleur à la lumière :	EN ISO 105-B02 (6)
Colour fastness to rubbing: Odporność barwy na tarcie: Reibechtheit: Résistance de la couleur au frottement:	EN ISO 105-X12 (wet: 4 / dry: 4)
Pilling: Odporność na pilling: Pilling: Résistance au boulochage :	-
Flammability: Trudnozapalność: Brandschutznormen: Résistance au feu :	EN 1021-1 EN 1021-2 BS 5852 Crib 5 BS 7176 medium hazard DIN 4102 B1 NF D 60-013 AM 18 ÖNORM A 3800-1 (over CMHR 58 kg/m <sup>3</sup> Foam) UNI 9175 Classe 1 IM
Other: Inne: Sonstiges: Autres :	EU Ecolabel certificate OEKO-TEX® STANDARD 100 certificate

# Technical specifications

Rivet   EGL	Cura   CUR	Hush   HG	
2	2	2	
100% REPREVE® (post-consumer recycled polyester) (poliester pochodzący z recyklingu poużytkowe- go - post-consumer) (recycltes Post-Consumer-Polyester) (polyester recyclé post-consommation)	100% post-consumer recycled polyester poliester pochodzący z recyklingu poużytkowego (post-consumer) recycltes Post-Consumer-Polyester polyester recyclé post-consommation	80% polyester poliester Polyester polyester	20% viscose wiskoza Viskose viscose
280 g/m² ±5%	300 g/m²	170 g/m²	
≥ 80 000	100 000	-	
EN ISO 105-B02 (5-6)	EN ISO 105-B02 (5-8)	EN ISO 105-B02 (5-7)	
EN ISO 105-X12 (wet: 4 / dry: 4)	EN ISO 105-X12 (wet: 4-5 / dry: 4-5)	EN ISO 105-X12 (wet: 4-5 / dry: 4-5)	
-	EN ISO 12945-2 (4-5)	-	
EN 1021-1, EN 1021-2 BS 7176 low hazard	EN 1021-1, EN 1021-2 Calif. Bull. 117E	BS 476-7 Class 1	
EU Ecolabel certificate Indoor Advantage™ certificate (Gold) Environmental Product Declaration - Synthetic fabric composition  Rivet fabric is compliant with the criteria of the Möbelfakta certification.	OEKO-TEX® STANDARD 100 certificate EU Ecolabel certificate	OEKO-TEX® STANDARD 100 certificate	

# Technical specifications

	Xtreme   XR
Price group: Grupa cenowa: Preisgruppe: Groupe de prix :	2
Composition: Skład: Material: Composition :	100% recycled polyester, non metallic dyestuffs poliester pochodzący z recyklingu, nie zawiera pigmentów metalicznych recycltes Polyester, nicht schwermetallhaltige Farbstoffe polyester recyclé, teintures non métalliques
Weight: Gramatura: Gewicht: Poids :	310 g/m <sup>2</sup> ±5%
Abrasion resistance ( <i>Martindale cycles</i> ): Odporność na ścieranie ( <i>cykle Martindale</i> ): Scheuerfestigkeit ( <i>Touren Martindale</i> ): Résistance à l'abrasion ( <i>cycles Martindales</i> ) :	≥100 000
Colour fastness to light: Odporność barwy na światło: Lichtechtheit: Résistance de la couleur à la lumière :	EN ISO 105-B02 (6)
Colour fastness to rubbing: Odporność barwy na tarcie: Reibechtheit: Résistance de la couleur au frottement:	EN ISO 105-X12 (wet: 4 / dry: 4)
Pilling: Odporność na pilling: Pilling: Résistance au boulochage :	EN ISO 12945-2 (5)
Flammability: Trudnozupalność: Brandschutznormen: Résistance au feu :	EN 1021-1, EN 1021-2 BS 5852 Crib 5, BS 7176 medium hazard, BS 476 Class 1, DIN 4102 B1, NF D 60-013
Other: Inne: Sonstiges: Autres :	EU Ecolabel certificate OEKO-TEX® STANDARD 100 certificate Indoor Advantage™ certificate (Gold) Environmental Product Declaration - Synthetic fabric composition  Xtreme fabric is compliant with the criteria of the Möbelfakta certification.

# Technical specifications

Valencia | VL

2

upper layer:  
warstwa wierzchnia:  
Deckmaterial:  
couche supérieure :

100%  
PERMABLOK3® (vinyl / urethane)  
PERMABLOK3® (winyl / uretan)  
PERMABLOK3® (Vinyl / Urethan)  
PERMABLOK3® (vinyle / uréthane)

bottom layer:  
podkład:  
Trägermaterial:  
couche inférieure :

100%  
Hi-Loft<sup>2TM</sup> polyester  
Hi-Loft<sup>2TM</sup> poliester  
Hi-Loft<sup>2TM</sup> Polyester  
polyester Hi-Loft<sup>2TM</sup>

650 g/m<sup>2</sup>

300 000

EN ISO 105-B02  
(5)

-

-

EN 1021-1, EN 1021-2  
DIN 4102 B2, NF P 92-503 M2  
Önorm A 3800-1 Q1, Önorm B 3825

## EN 71-3

safety of toys (migration of certain elements)  
bezpieczeństwo zabawek (migracja określonych pierwiastków)  
Sicherheit von Spielzeug (Migration bestimmter Elemente)  
sécurité des jouets (migration de certains éléments)

## PERMABLOK3® ISO 18184

reduction of Coronavirus<sup>1</sup> presence by more  
than 90% within one hour of contact  
redukcja obecności Coronavirus<sup>1</sup> o ponad  
90% w ciągu godziny od kontaktu  
Reduzierung der Präsenz von Coronavirus<sup>1</sup> um mehr  
als 90% innerhalb einer Stunde nach Kontakt  
reduit la présence du Coronavirus<sup>1</sup> de plus  
de 90% dans l'heure suivant le contact

## ISO 21702

reduction of Coronavirus<sup>1</sup> activity by 99,9%  
within 24 hours of exposure on the surface  
redukcja aktywności Coronavirus<sup>1</sup> na powierzchni  
o 99,9% w ciągu 24 godzin od momentu ekspozycji  
Reduzierung der Aktivität des Coronavirus<sup>1</sup> um 99,9%  
innerhalb von 24 Stunden nach Exposition auf der Oberfläche  
reduit l'activité du Coronavirus<sup>1</sup> sur la surface de 99,9%  
dans les 24 heures suivant l'exposition

superior antibacterial, stain resistant and antifungal protection  
doskonała ochrona przed bakteriami, plamami i grzybami  
hervorragender Schutz gegen Bakterien, Flecken und Pilzbefall  
traitement de protection, antibactérien, antitaches et antifongique

GO TO INDEX

# Technical specifications

	Boogie   BO
Price group: Grupa cenowa: Preisgruppe: Groupe de prix :	2
Composition: Skład: Material: Composition :	100% polyester poliester Polyester polyester
Weight: Gramatura: Gewicht: Poids :	478 g/m <sup>2</sup>
Abrasion resistance ( <i>Martindale cycles</i> ): Odporność na ścieranie ( <i>cykle Martindale</i> ): Scheuerfestigkeit ( <i>Touren Martindale</i> ): Résistance à l'abrasion ( <i>cycles Martindales</i> ) :	≥ 100 000
Colour fastness to light: Odporność barwy na światło: Lichtechtheit: Résistance de la couleur à la lumière :	EN ISO 105-B02 (5)
Colour fastness to rubbing: Odporność barwy na tarcie: Reibechtheit: Résistance de la couleur au frottement:	EN ISO 105-X12 (wet: 4-5 / dry: 5)
Pilling: Odporność na pilling: Pilling: Résistance au boulochage :	EN ISO 12945-2 (4-5)
Flammability: Trudnozapalność: Brandschutznormen: Résistance au feu :	BS 5852 source 0
Other: Inne: Sonstiges: Autres :	Oeko-Tex® Standard 100 certificate

Home | HM

2

100%  
polyester  
poliester  
Polyester  
polyester

420 g/m<sup>2</sup>

≥ 100 000

EN ISO 105-B02  
(4)

EN ISO 105-X12  
(wet: 4-5 / dry: 4-5)


EN ISO 12945-2  
(4)

BS 5852 source 0

Oeko-Tex® Standard 100 certificate

[GO TO INDEX](#)

# Technical specifications

	Runner   RN	
Price group: Grupa cenowa: Preisgruppe: Groupe de prix :		
Composition: Skład: Material: Composition :	80% polyester poliester Polyester polyester	20% post-consumer recycled polyester poliester pochodzący z recyklingu użytkowego (post-consumer) recyclates Post-Consumer-Polyester polyester recyclé post-consommation
Weight: Gramatura: Gewicht: Poids :	318 g/m <sup>2</sup>	
Abrasion resistance ( <i>Martindale cycles</i> ): Odporność na ścieranie ( <i>cykle Martindale</i> ): Scheuerfestigkeit ( <i>Touren Martindale</i> ): Résistance à l'abrasion ( <i>cycles Martindales</i> ) :	70 000	
Colour fastness to light: Odporność barwy na światło: Lichtechtheit: Résistance de la couleur à la lumière :	EN ISO 105-B02 (5-7)	
Colour fastness to rubbing: Odporność barwy na tarcie: Reibechtheit: Résistance de la couleur au frottement:	EN ISO 105-X12 (wet: 4-5 / dry: 4-5)	
Pilling: Odporność na pilling: Pilling: Résistance au boulochage :	EN ISO 12945-2 (5)	
Flammability: Trudnozapalność: Brandschutznormen: Résistance au feu :	EN 1021-1, EN 1021-2, Calif. Bull. 117E	
Other: Inne: Sonstiges: Autres :	OEKO-TEX® STANDARD 100 certificate EU Ecolabel certificate Cradle to Cradle Certified® Bronze	

# Technical specifications

Silvertex | SX

3

upper layer:  
warstwa wierzchnia:  
Deckmaterial:  
couche supérieure :

100%  
PERMABLOK3® (vinyl / urethane  
PERMABLOK3® (winył / uretan)  
PERMABLOK3® (Vinyl / Urethan)  
PERMABLOK3® (vinył / uréthane)

bottom layer:  
podkład:  
Trägermaterial:  
couche inférieure :

100%  
bottom layer: Hi-Loft<sup>2</sup>™ polyester  
podkład: Hi-Loft<sup>2</sup>™ poliester  
Trägermaterial: Hi-Loft<sup>2</sup>™ Polyester  
couche inférieure : polyester Hi-Loft<sup>2</sup>™

685 g/m<sup>2</sup>

300 000

-

-

-

EN 1021-1, EN 1021-2  
DIN 4102 B2, NF P 92-503 M2  
Önorm B 3825, Önorm A 3800-1 Q1

## EN 71-3

safety of toys (migration of certain elements)  
bezpieczeństwo zabawek (migracja określonych pierwiastków)  
Sicherheit von Spielzeug (Migration bestimmter Elemente)  
sécurité des jouets (migration de certains éléments)

## PERMABLOK3® ISO 18184

reduction of Coronavirus<sup>1</sup> presence by more  
than 90% within one hour of contact  
redukcja obecności Coronavirus<sup>1</sup> o ponad  
90% w ciągu godziny od kontaktu  
Reduzierung der Präsenz von Coronavirus<sup>1</sup> um mehr  
als 90% innerhalb einer Stunde nach Kontakt  
reduit la présence du Coronavirus<sup>1</sup> de plus  
de 90% dans l'heure suivant le contact

## ISO 21702

reduction of Coronavirus<sup>1</sup> activity by 99,9%  
within 24 hours of exposure on the surface  
redukcja aktywności Coronavirus<sup>1</sup> na powierzchni  
o 99,9% w ciągu 24 godzin od momentu ekspozycji  
Reduzierung der Aktivität des Coronavirus<sup>1</sup> um 99,9%  
innerhalb von 24 Stunden nach Exposition auf der Oberfläche  
reduit l'activité du Coronavirus<sup>1</sup> sur la surface de 99,9%  
dans les 24 heures suivant l'exposition


superior antibacterial, stain resistant and antifungal protection  
doskonała ochrona przed bakteriami, plamami i grzybami  
hervorragender Schutz gegen Bakterien, Flecken und Pilzbefall  
traitement de protection, antibactérien, antitaches et antifongique

GO TO INDEX

# Technical specifications

	Step   STG Step Melange   STMG	Split Leather   SP
Price group: Grupa cenowa: Preisgruppe: Groupe de prix :	3	3
Composition: Skład: Material: Composition :	100% Trevira CS	100% pigmented split leather (1.1 - 1.3 mm) skóra dwoina (1,1 - 1,3 mm) Spaltleder (1,1 - 1,3 mm) croûte de cuir (1,1 - 1,3 mm)
Weight: Gramatura: Gewicht: Poids :	335 g/m <sup>2</sup>	-
Abrasion resistance ( <i>Martindale cycles</i> ): Odporność na ścieranie ( <i>cykle Martindale</i> ): Scheuerfestigkeit ( <i>Touren Martindale</i> ): Résistance à l'abrasion ( <i>cycles Martindales</i> ) :	100 000	-
Colour fastness to light: Odporność barwy na światło: Lichtechtheit: Résistance de la couleur à la lumière :	EN ISO 105-B02 (5-7)	-
Colour fastness to rubbing: Odporność barwy na tarcie: Reibechtheit: Résistance de la couleur au frottement:	EN ISO 105-X12 (wet: 4-5 / dry: 4-5)	-
Pilling: Odporność na pilling: Pilling: Résistance au boulochage :	EN ISO 12945-2 (4-5)	-
Flammability: Trudnozapalność: Brandschutznormen: Résistance au feu :	EN 1021-1, EN 1021-2, BS 5852 Crib 5, BS 7176 medium hazard, DIN 4102 B1, NF P 92-503-5 M1, NF D 60-013 AM 18, Calif. Bull. 117E	EN 1021-1, EN 1021-2
Other: Inne: Sonstiges: Autres :	EU Ecolabel certificate OEKO-TEX® STANDARD 100 certificate	-

# Technical specifications

Harlequin   HQ		Rhythm   RH
		
<p>77% polyester poliester Polyester polyester</p>	<p>23% post-consumer recycled polyester poliester pochodzący z recyklingu użytkowego (post-consumer) recyceltes Post-Consumer-Polyester polyester recyclé post-consommation</p>	<p>100% polyester/polyester flame retardant 100% poliester / poliester trudnozapalny 100% Polyester / Polyester flammhemmend 100% polyester / polyester ignifugé</p>
318 g/m <sup>2</sup>		328 g/m <sup>2</sup>
100 000		70 000
EN ISO 105-B02 (5-7)		EN ISO 105-B02 (5-7)
EN ISO 105-X12 (wet: 4-5 / dry: 4-5)		EN ISO 105-X12 (wet: 4-5 / dry: 4-5)
EN ISO 12945-2 (5)		EN ISO 12945-2 (5)
EN 1021-1, EN 1021-2 Calif. Bull. 117E		EN 1021-1, EN 1021-2 BS 5852 Crib 5 BS 7176 Medium hazard DIN 4102 B1 NF P 92-503 M3 Calif. Bull. 117E
OEKO-TEX® STANDARD 100 certificate EU Ecolabel certificate Cradle to Cradle Certified® Bronze		OEKO-TEX® STANDARD 100 certificate

GO TO INDEX

# Technical specifications

	Moulin-FR   MU			
Price group: Grupa cenowa: Preisgruppe: Groupe de prix :	<b>3</b>			
Composition: Skład: Material: Composition :	77% polypropylene polipropylen Polypropylen polypropylène	10% recycled polyester from bottles poliester z recyklingu z butelek recycltes Polyester aus Flaschen polyester recyclé provenant de bouteilles	7% modacrylic modakryl Modacryl modacrylique	6% recycled cotton bawełna z recyklingu recyclte Baumwolle coton recyclé
Weight: Gramatura: Gewicht: Poids :	568 gr/m <sup>2</sup> ±5%			
Abrasion resistance ( <i>Martindale cycles</i> ): Odporność na ścieranie ( <i>cykle Martindale</i> ): Scheuerfestigkeit ( <i>Touren Martindale</i> ): Résistance à l'abrasion ( <i>cycles Martindales</i> ) :	80 000			
Colour fastness to light: Odporność barwy na światło: Lichtechtheit: Résistance de la couleur à la lumière :	EN ISO 105-B02 (min. 6)			
Colour fastness to rubbing: Odporność barwy na tarcie: Reibechtheit: Résistance de la couleur au frottement:	EN ISO 105-X12 (wet: 4-5 / dry: 4-5)			
Pilling: Odporność na pilling: Pilling: Résistance au boulochage :	EN ISO 12945-2 (4-5)			
Flammability: Trudnozupalność: Brandschutznormen: Résistance au feu :	EN 1021-1, EN 1021-2 BS 7176 low hazard Calif. Bull. 117			
Other: Inne: Sonstiges: Autres :	Oeko-Tex® Standard 100 certificate			

Chili | CG

3

100%

post-consumer recycled polyester FR (FR inside the fiber)  
poliester FR pochodzący z recyklingu poużytkowego (FR wewnątrz włókna)  
recycltes Polyester FR (FR in der Faser)  
polyester recyclé post-consommation FR (FR à l'intérieur de la fibre)

335 g/m<sup>2</sup>

60 000

EN ISO 105-B02  
(5-8)

EN ISO 105-X12  
(wet: 4-5 / dry: 4-5)

EN ISO 12945-2  
(4-5)

EN 1021-1  
EN 1021-2  
BS 5852 Crib 5  
BS 7176 medium hazard  
DIN 4102 B1  
NF P 92-503-5 M1  
NF D 60-013 AM 18  
EN 13501-1 B-s1, d0  
Calif. Bull. 117

Oeko-Tex® Standard 100 certificate  
EU Ecolabel certificate

# Technical specifications

	skai® Parotega	
Price group: Grupa cenowa: Preisgruppe: Groupe de prix :	4	
Composition: Skład: Material: Composition :	approx. 85% PVC-compound ok. 85% mieszanka PVC ca. 85% PVC-Compound env. 85 % mélange de PVC	approx. 15% CO-knitted fabric ok. 15% dzianina bawełniana ca. 15% BW-Gestrick env. 15 % tissu en tricot en coton
Weight: Gramatura: Gewicht: Poids :	780 g/m <sup>2</sup> +/- 50 g/m <sup>2</sup>	
Abrasion resistance ( <i>Martindale cycles</i> ): Odporność na ścieranie ( <i>cykle Martindale</i> ): Scheuerfestigkeit ( <i>Touren Martindale</i> ): Résistance à l'abrasion ( <i>cycles Martindales</i> ) :	300 000	
Colour fastness to light: Odporność barwy na światło: Lichtechtheit: Résistance de la couleur à la lumière :	EN ISO 105-B02 (7)	
Colour fastness to rubbing: Odporność barwy na tarcie: Reibechtheit: Résistance de la couleur au frottement:	-	
Pilling: Odporność na pilling: Pilling: Résistance au boulochage :	-	
Flammability: Trudnozupalność: Brandschutznormen: Résistance au feu :	EN1021-1 EN1021-2 BS 5852 Crib 5 DIN 4102 B1 DIN 4102 B2 DIN EN 13501-1 B, s3, d0 DIN 66084 P-a NF P 92-503 M1 NF D 60-013 AM 18	
Other: Inne: Sonstiges: Autres :	-	

# Technical specifications

Blazer   CUZ	Blazer Lite   LTH
	
<p>100% virgin wool, non metallic dyestuffs czysta wełna, nie zawiera pigmentów metalicznych Schurwolle, nicht schwermetallhaltige Farbstoffe pure laine vierge, teintures non métalliques</p>	<p>100% virgin wool, non metallic dyestuffs czysta wełna, nie zawiera pigmentów metalicznych Schurwolle, nicht schwermetallhaltige Farbstoffe pure laine vierge, teintures non métalliques</p>
460 g/m <sup>2</sup> ±5%	355 g/m <sup>2</sup> ±5%
≥45 000	-
EN ISO 105-B02 (4-6)	EN ISO 105-B02 (5)
-	-
-	-
<p>EN 1021-1, EN 1021-2 BS 7176 low hazard BS 476 Class 1, NF D 60-013 AM 18</p>	<p>EN 13501-1 (class C, s1, d0) BS 476 Class 1</p>
<p>EU Ecolabel certificate Indoor Advantage™ certificate (Gold) Environmental Product Declaration - Natural fabric composition</p>	<p>EU Ecolabel certificate Indoor Advantage™ certificate (Gold) Environmental Product Declaration - Natural fabric composition</p>

# Technical specifications

	Synergy   LDS	
Price group: Grupa cenowa: Preisgruppe: Groupe de prix :	4	
Composition: Skład: Material: Composition :	95% virgin wool czysta wełna Schurwolle pure laine vierge	5% polyamide poliamid Polyamid polyamide
Weight: Gramatura: Gewicht: Poids :	400 g/m <sup>2</sup> ±5%	
Abrasion resistance ( <i>Martindale cycles</i> ): Odporność na ścieranie ( <i>cykle Martindale</i> ): Scheuerfestigkeit ( <i>Touren Martindale</i> ): Résistance à l'abrasion ( <i>cycles Martindales</i> ) :	≥100 000	
Colour fastness to light: Odporność barwy na światło: Lichtechtheit: Résistance de la couleur à la lumière :	EN ISO 105-B02 (5)	
Colour fastness to rubbing: Odporność barwy na tarcie: Reibechtheit: Résistance de la couleur au frottement:	EN ISO 105-X12 (wet: 4 / dry: 4)	
Pilling: Odporność na pilling: Pilling: Résistance au boulochage :	EN ISO 12945-2 (4)	
Flammability: Trudnozapalność: Brandschutznormen: Résistance au feu :	EN 1021-1, EN 1021-2 BS 7176 low hazard, NF D 60-013 AM 18 ÖNORM B 3825 & A 3800-1 (58 kg/m <sup>3</sup> CMHR Foam)	
Other: Inne: Sonstiges: Autres :	EU Ecolabel certificate Indoor Advantage™ certificate (Gold) Environmental Product Declaration - Natural fabric composition	

# Technical specifications

Main Line Flax | MLF

4

75%  
virgin wool  
czysta wełna  
Schurwolle  
pure laine vierge

25%  
flax  
len  
Flachs  
lin

437 g/m<sup>2</sup> ±5%

≥50 000

EN ISO 105 - B02  
(4-5)

-

-

EN 1021-1, EN 1021-2,  
BS 7176 medium hazard  
ÖNORM B 3825 & A 3800-1 (58kg/m<sup>3</sup> CMHR Foam)  
UNI 9175 Classe 1 IM  
BS 5852 Crib 5  
NF D 60-013 AM 18

EU Ecolabel certificate  
Indoor Advantage™ certificate (Gold)  
Environmental Product Declaration - Natural fabric composition

[GO TO INDEX](#)

# Technical specifications

	24/7 Flax   FYR		
Price group: Grupa cenowa: Preisgruppe: Groupe de prix :	4		
Composition: Skład: Material: Composition :	54% polyamide poliamid Polyamid polyamide	35% wool wełna Wolle laine	11% flax len Flachs lin
Weight: Gramatura: Gewicht: Poids :	390 g/m <sup>2</sup> ±5%		
Abrasion resistance ( <i>Martindale cycles</i> ): Odporność na ścieranie ( <i>cykle Martindale</i> ): Scheuerfestigkeit ( <i>Touren Martindale</i> ): Résistance à l'abrasion ( <i>cycles Martindales</i> ) :	≥200 000		
Colour fastness to light: Odporność barwy na światło: Lichtechtheit: Résistance de la couleur à la lumière :	EN ISO 105-B02 (5)		
Colour fastness to rubbing: Odporność barwy na tarcie: Reibechtheit: Résistance de la couleur au frottement:	-		
Pilling: Odporność na pilling: Pilling: Résistance au boulochage :	-		
Flammability: Trudnozupalność: Brandschutznormen: Résistance au feu :	EN 1021-1, EN 1021-2 BS 5852 Crib 5, BS 7176 medium hazard NF D 60 - 013 AM 18 UNI 9175 / Classe 1 (IM)		
Other: Inne: Sonstiges: Autres :	Indoor Advantage™ certificate (Gold)		

# Technical specifications

Hi-Tech | AS

4

60%  
polypropylene  
polipropylen  
Polypropylen  
polypropylène

29%  
wool  
wełna  
Wolle  
laine

10%  
viscose  
wiskoza  
Viskose  
viscose

1%  
carbon fibre  
włókno węglowe  
Carbon Faser  
fibre de carbone

385 g/m<sup>2</sup> ±5%

≥60 000

EN ISO 105-B02  
(5)

-

-

EN 1021-1, EN 1021-2  
BS 7176 Low Hazard

The fabric with unique anti-static properties. It has been specifically designed to dissipate any build up of static electricity so there are no nasty shocks.

Tkanina o wyjątkowych właściwościach antystatycznych. Została zaprojektowana tak, aby rozpraszać nagromadzone ładunki elektrostatyczne i unikać nieprzyjemnych dla człowieka wyładowań.

Hi-Tech ist ein besonders leistungsstarker Polsterstoff mit einzigartigen antistatischen Eigenschaften. Er wurde speziell entwickelt, um den Aufbau statischer Aufladung vom Möbelstück zur Erde abzuleiten, so dass es keine unangenehmen Schläge gibt.

Tissu ayant des propriétés antistatiques exceptionnelles. Grâce à sa structure, il disperse des charges électrostatiques qui s'accumulent, et il évite ainsi des petites décharges désagréables.

[GO TO INDEX](#)

# Technical specifications

	Focus Royal   FC	Fine Leather   SD, LE
Price group: Grupa cenowa: Preisgruppe: Groupe de prix :	4	5
Composition: Skład: Material: Composition :	100% New Zealand wool wełna New Zealand New Zealand Wolle laine de New Zealand	100% pigmented soft grain leather (0.9 - 1.1mm), dyed through miękką skórą licowa (0,9 - 1,1mm), barwiona weiches Oberleder (0,9 - 1,1mm), durchgefärbt cuir pleine fleur corrigé (épaisseur 0,9 - 1,1mm), entièrement teinté
Weight: Gramatura: Gewicht: Poids :	450 g/m <sup>2</sup>	-
Abrasion resistance (Martindale cycles): Odporność na ścieranie (cykle Martindale): Scheuerfestigkeit (Touren Martindale): Résistance à l'abrasion (cycles Martindales) :	100 000	-
Colour fastness to light: Odporność barwy na światło: Lichtechtheit: Résistance de la couleur à la lumière :	EN ISO 105-B02 (5-8)	-
Colour fastness to rubbing: Odporność barwy na tarcie: Reibechtheit: Résistance de la couleur au frottement:	EN ISO 105-X12 (wet: 4-5 / dry: 4-5)	-
Pilling: Odporność na pilling: Pilling: Résistance au boulochage :	EN ISO 12945-2 (4-5)	-
Flammability: Trudnozapalność: Brandschutznormen: Résistance au feu :	EN 1021-1 EN 1021-2 Calif. Bull. 117	EN 1021-1, EN 1021-2
Other: Inne: Sonstiges: Autres :	Oeko-Tex® Standard 100 certificate EU Ecolabel certificate	-

# Technical specifications

Remix 3 | RX

5

90%  
new wool  
czysta żywa wełna  
Schurwolle  
pure laine vierge

10%  
nylon  
nylon  
Nylon  
nylon

300 g/m<sup>2</sup>

100 000

EN ISO 105-B02  
(6)

EN ISO 105-X12  
(wet: 4 / dry: 4-5)

EN ISO 12945-2  
(4)

EN 1021-1, EN 1021-2  
NF D 60-013 AM 18  
Önorm A 3800-1 (Q1),  
Önorm B 3825 (B1)  
Calif. Bull. 117E

EU Ecolabel  
certificate  
Greenguard  
certificate (Gold)  
Environmental  
Product Declaration (EPD)

Remix 3 fabric is compliant with the criteria  
of the Möbelfakta certification.

[GO TO INDEX](#)

# Technical specifications

	Nappa Leather   NAP
Price group: Grupa cenowa: Preisgruppe: Groupe de prix :	6
Composition: Skład: Material: Composition :	100% leather (1.0-1.2 mm) skóra (1,0-1,2 mm) Leder (1,0-1,2 mm) cuir (1,0-1,2 mm)
Weight: Gramatura: Gewicht: Poids :	-
Abrasion resistance ( <i>Martindale cycles</i> ): Odporność na ścieranie ( <i>cykle Martindale</i> ): Scheuerfestigkeit ( <i>Touren Martindale</i> ): Résistance à l'abrasion ( <i>cycles Martindales</i> )	-
Colour fastness to light: Odporność barwy na światło: Lichtechtheit: Résistance de la couleur à la lumière :	EN ISO 105 - B02 (≥ 5)
Colour fastness to rubbing: Odporność barwy na tarcie: Reibechtheit: Résistance de la couleur au frottement:	-
Pilling: Odporność na pilling: Pilling: Résistance au boulochage :	-
Flammability: Trudnozapalność: Brandschutznormen: Résistance au feu :	EN 1021-1, EN 1021-2
Other: Inne: Sonstiges: Autres :	<p>Raw material: hides of Central European breeds. Environmentally friendly mineral tanning.</p> <p>Surowiec: skóry ras środkowoeuropejskich. Przyjazne dla środowiska garbowanie mineralne.</p> <p>Rohstoff: Häute mitteleuropäischer Rassen. Umweltfreundliche mineralische Gerbung.</p> <p>Matière première : peaux de races d'Europe centrale. Tannage minéral respectueux de l'environnement.</p>

Arona Leather | AN

6

Leather with high-quality mineral tanning,  
non-solvent PU-finishing (1.0-1.3 mm)

Skóra z wysokiej jakości garbowaniem mineralnym,  
bezzropuszczalnikowe wykończenie PU (1,0-1,3 mm)

Leder mit hochwertiger Mineralgerbung,  
lösungsmittelfreie PU-Ausrüstung (1,0-1,3 mm)

Cuir avec tannage minéral de haute qualité,  
finition PU sans solvant (1,0-1,3 mm)

-

-

EN ISO 105 - B02  
( $\geq 5$ )

EN ISO 11640  
(wet:  $\geq 4$ /dry:  $\geq 4$ )

-

EN 1021-1, EN 1021-2

Raw material: South-German and Austrian cattle hides  
Surowiec: skóry bydłce z południowych Niemiec i Austrii  
Rohstoff: Rindshäute aus Süddeutschland und Österreich  
Matière première : peaux de bovins du sud de l'Allemagne et d'Autriche

# Technical specifications

	Mesh AX for Xilium	Mesh WX for Xilium		Mesh MF for Navigo
Composition: Skład: Material: Composition :	100% polyester poliester Polyester polyester	33% polyelastomer polielastomer Polyelastomer polyelastomer	67% PA66	100% polyester poliester Polyester polyester
Weight: Gramatura: Gewicht: Poids :	570 g/m <sup>2</sup> +/- 5%	361 g/m <sup>2</sup>		360 +/- 5% g/m <sup>2</sup>
Abrasion resistance ( <i>Martindale cycles</i> ): Odporność na ścieranie ( <i>cykle Martindale</i> ): Scheuerfestigkeit ( <i>Touren Martindale</i> ): Résistance à l'abrasion ( <i>cycles Martindales</i> ) :	≥45 000	≥100 000		100 000
Colour fastness to light: Odporność barwy na światło: Lichtechtheit: Résistance de la couleur à la lumière :	EN ISO 105-B02 (>6)	EN ISO 105-B02 (4)		EN ISO 105-B02 (6)
Colour fastness to rubbing: Odporność barwy na tarcie: Reibechtheit: Résistance de la couleur au frottement:	EN ISO 105-X12 (wet: 5/ dry: 4-5)	EN ISO 105-X12 (wet: 4-5/ dry: 4-5)		EN ISO 105-X12 (wet: 4-5/ dry: 4-5)
Pilling: Odporność na pilling: Pilling: Résistance au boulochage :	EN ISO 12945-2 (5)	EN ISO 12945-2 (4-5)		EN ISO 12945-2 (5)
Flammability: Trudnozupalność: Brandschutznormen: Résistance au feu :	EN 1021-1, EN 1021-2	EN 1021-1, EN 1021-2		EN 1021-1, EN 1021-2
Other: Inne: Sonstiges: Autres :	EU Ecolabel certificate	OEKO-TEX® STANDARD 100 certificate		OEKO-TEX® STANDARD 100 certificate

# Technical specifications

Mesh OP	Mesh MX for Xenium		Mesh KR.4921		Mesh MT
100% polyester polyester Polyester polyester	25% polyamide poliamid Polyamid polyamide	75% polyester polyester Polyester polyester	34% polyamide poliamid Polyamid polyamide	66% polyester polyester Polyester polyester	100% post-consumer recycled polyester poliester pochodzący z recyklingu pożytkowego (post-consumer) recycltes Post-Consumer-Polyester polyester recyclé post-consommation
270 +/- 5% g/m <sup>2</sup>	350 g/m <sup>2</sup>		240 g/m <sup>2</sup>		260 g/m <sup>2</sup>
50 000	40 000		200 000		100 000
-	-		EN ISO 105-B02 (5)		EN ISO 105-B02 (6-8)
-	EN ISO 105-X12 (wet: 4-5/ dry: 4-5)		EN ISO 105-X12 (wet: 4-5/ dry: 4-5)		EN ISO 105-X12 (wet: 4-5/dry: 4-5)
-	-		EN ISO 12945-2 (5)		EN ISO 12945-2 (5)
EN 1021-1, EN 1021-2 (OP24N only)	EN 1021-1		EN 1021-1		EN 1021-1, EN 1021-2 Calif. Bull. 117E
-	-		-		EU Ecolabel certificate OEKO-TEX® STANDARD 100 certificate

# Technical specifications

	Mesh NTS for Sail		Mesh MV
Composition: Skład: Material: Composition :	99% polyester poliester Polyester polyester	1% elastane elastan Elasthan élasthane	80% post-consumer recycled polyester  poliester pochodzący z recyklingu użytkowego (post-consumer)  recyceltes Post-Consumer -Polyester  polyester recyclé post-consommation  20% elastomeric polymer polimer elastomerowy elastomeres Polymer polymère élastomère
Weight: Gramatura: Gewicht: Poids :	175 g/m <sup>2</sup>		230 g/m <sup>2</sup>
Abrasion resistance ( <i>Martindale cycles</i> ): Odporność na ścieranie ( <i>cykle Martindale</i> ): Scheuerfestigkeit ( <i>Touren Martindale</i> ): Résistance à l'abrasion ( <i>cycles Martindales</i> ) :	30 000		100 000
Colour fastness to light: Odporność barwy na światło: Lichtechtheit: Résistance de la couleur à la lumière :	EN ISO 105-B02 (6)		EN ISO 105-B02 (6-8)
Colour fastness to rubbing: Odporność barwy na tarcie: Reibechtheit: Résistance de la couleur au frottement:	EN ISO 105-X12 (wet: 4-5/ dry: 4-5)		EN ISO 105-X12 (wet: 4-5/ dry: 4-5)
Pilling: Odporność na pilling: Pilling: Résistance au boulochage :	EN ISO 12945-2 (5)		EN ISO 12945-2 (5)
Flammability: Trudnozupalność: Brandschutznormen: Résistance au feu :	EN 1021-1		EN 1021-1, EN 1021-2, Calif. Bull. 117E
Other: Inne: Sonstiges: Autres :	-		OEKO-TEX® STANDARD 100 certificate Cradle to Cradle Certified® Bronze

# Technical specifications

Mesh PX02 for @-Motion/ Net Motion	Mesh PX01		Elasto-net for YouTEAM™	Felt for Formo wall panels, Tepee panels	Felt for Formo curtain
100% polyester poliester Polyester polyester	77% PVC	23% PES	TPU thermoplastic polyurethane elastomer  termoplastyczny elastomer poliuretanowy  thermoplastisches Polyurethanelastomer  élastomère de polyuréthane thermoplastique	100% polyester fiber włókno poliestrowe Polyesterfasern fibre de polyester	100% polyester fiber włókno poliestrowe Polyesterfasern fibre de polyester
350 g/m <sup>2</sup>	560 g/m <sup>2</sup>		1,21kg/dm <sup>3</sup> *  *density *gęstość *dichte *densité	1000 g/m <sup>2</sup> for thickness 7.5 mm dla grubości 7,5 mm bei einer Stärke von 7,5 mm pour une épaisseur de 7,5 mm	650 g/m <sup>2</sup> for thickness 7.5 mm dla grubości 7,5 mm bei einer Stärke von 7,5 mm pour une épaisseur de 7,5 mm
10 000	100 000		-	-	-
-	EN ISO 105-B02 (5)		-	-	-
-	EN ISO 105-X12		-	-	-
-	-		-	-	-
EN 1021-1	-		-	EN 1021-1, EN 1021-2	-
-	-		-	-	-

# Legend

## Fabrics



cigarette & match

- EN** the certificate confirming standards EN 1021-1 and EN 1021-2 or with another equivalent standard recognized in the European Union
- PL** certyfikat potwierdzający spełnianie norm EN 1021-1 i EN 1021-2 lub innej równoważnej rozpoznawanej w Unii Europejskiej
- DE** Zertifikat zur Erfüllung der Normen EN 1021-1 und EN 1021-2
- FR** Le certificat attestant la conformité aux normes EN 1021-1 et EN 1021-2 ou à une autre norme équivalente reconnue dans l'Union européenne



high abrasion resistance

- EN** the fabric with confirmed min. 100 000 Martindale cycles
- PL** tapicerka o potwierdzonej ilości cykli Martindale'a min. 100 000
- DE** Material mit nachweislich min. 100.000 Touren nach Martindale
- FR** le revêtement avec au moins 100 000 cycles Martindales confirmés



high flame resistance

- EN** the certificate confirming the standards like DIN 4102-1 B1, BS 5852 Crib 5
- PL** certyfikat potwierdzający spełnianie norm takich jak DIN 4102-1 B1, BS 5852 Crib 5
- DE** Zertifikat zur Erfüllung von Normen wie DIN 4102-1 B1, BS 5852 Crib 5
- FR** le certificat attestant la conformité aux normes telles que: DIN 4102-1 B1, BS 5852 Crib 5



heavy duty

- EN** the fabric with confirmed min. 200 000 Martindale cycles (extensive usage during 24/7work, according to BS 5459-2 norm)
- PL** tapicerka o potwierdzonej ilości cykli Martindale'a min. 200 000 (wzmoczone użytkowanie w trybie pracy 24/7, wg normy BS 5459-2)
- DE** Material mit nachweislich min. 200.000 Touren nach Martindale (extensive Nutzung während 24/7-Arbeit, gemäß der Norm BS 5459-2)
- FR** le revêtement avec au moins 200 000 cycles Martindales confirmés (utilisation intensive en mode de travail 24 h/24, 7 j/7, conformément à la norme BS 5459-2)



easy to disinfect

- EN** fabrics which can be disinfected with ethanol (70-75%) based products
- PL** tapicerki, które mogą być dezynfekowane produktami na bazie etanolu (70-75%)
- DE** Stoffe, die mit Produkten auf Basis von Ethanol (70-75 %) desinfiziert werden können
- FR** les tissus pouvant être désinfectés avec des produits à base d'éthanol (70-75 %)



natural origin

- EN** natural origin of the material: wool, leather etc.
- PL** naturalne pochodzenie materiału: wełna, skóra itp.
- DE** natürlicher Ursprung des Materials: Wolle, Leder etc.
- FR** l'origine naturelle du matériau: laine, cuir, etc.



easily washable

- EN** the feature concerns coated materials (e.g. Silvertex, Valencia)
- PL** właściwość materiałów powlekanych (np. Silvertex, Valencia)
- DE** dieses Merkmal betrifft beschichtete Materialien (z. B. Silvertex, Valencia)
- FR** la propriété concerne les matériaux enduits (par exemple Silvertex, Valencia)



recycled origin

- EN** the fabric obtained from recycled materials
- PL** materiał pozyskiwany z recyklingu
- DE** aus recycelten Materialien gewonnener Stoff
- FR** le tissu obtenu à partir des matériaux recyclés



environmentally friendly

- EN** the certificate like EU Ecolabel, C2C, Blue Angel
- PL** certyfikat typu EU Ecolabel, C2C, Blue Angel
- DE** Zertifikate wie EU Ecolabel, C2C, Blauer Engel
- FR** le certificat de type EU Ecolabel, C2C, Blue Angel



confirmed safety

- EN** the certificate like Oeko-Tex Standard100 or test reports according to EN 71-3 norm
- PL** certyfikat typu Oek-Tex Standard 100 lub wynik testów zgodny z normą EN 71-3
- DE** Zertifikate wie Oeko-Tex Standard 100 oder Prüfgutachten nach der Norm EN 71-3
- FR** le certificat de type Oeko-Tex Standard 100, ou les résultats de tests conformes à la norme EN 71-3

## Fenix NTM®



thermal healing of micro-scratches

- EN** thermal healing of superficial micro-scratches
- PL** termiczna naprawa powierzchniowych mikrouszkodzeń
- DE** thermische Reparierbarkeit von oberflächlichen Mikrokratzen
- FR** réparabilité thermique des micro-rayures superficielles



soft touch

- EN** soft touch
- PL** przyjemny w dotyku
- DE** weiche Haptik
- FR** toucher soyeux



low light reflectivity

- EN** extremely matt surface
- PL** wyjątkowo matowa powierzchnia
- DE** extrem matte Oberfläche
- FR** surface extrêmement mate



anti-fingerprint

- EN** anti-fingerprint
- PL** niewidoczne odciski palców
- DE** schutz vor Fingerabdrücken
- FR** anti-traces

## Other



pressure resistant



chipping resistant



UV rays resistant

- EN** resistance to different factors
- PL** odporność na różne czynniki
- DE** Widerstandsfähigkeit gegenüber verschiedenen Faktoren
- FR** résistance aux plusieurs facteurs



rainwater retention

- EN** water quickly evacuated from the table top
- PL** szybkie odprowadzanie wody z blatu
- DE** Flüssigkeit wird schnell von der Tischoberfläche abgeleitet
- FR** évacuation rapide d'eau du plateau de table



high temperature resistant



weather conditions resistant



scratches resistant

GO TO INDEX

**EN** Range of finishes for each product line available at [www.NowyStyl.com](http://www.NowyStyl.com)  
**PL** Dedykowana paleta wykończeń dla każdej linii produktowej dostępna na [www.NowyStyl.com](http://www.NowyStyl.com)  
**DE** Alle verfügbaren Stoffe und Oberflächen jeder Produktlinie finden Sie unter [www.NowyStyl.com](http://www.NowyStyl.com)  
**FR** Pour chaque ligne de produits, les gammes de finitions sont disponibles sur notre site [www.NowyStyl.com](http://www.NowyStyl.com)

**EN** The feasibility of a specific product in upholstery or other finishes should be checked in the proper price list.  
**PL** Wykonalność konkretnego produktu w tapicerce lub innych wykończeniach należy sprawdzić we właściwym cenniku.  
**DE** Die Verfügbarkeit eines bestimmten Stoffes oder anderer Oberflächen für ein ausgewähltes Produkt entnehmen Sie bitte der entsprechenden Preisliste.  
**FR** La faisabilité du produit spécifique avec les tissus sélectionnés ou autres finitions : veuillez consulter le tarif correspondant.

---

© Copyright 2025 Nowy Styl sp. z o.o.

Nowy Styl sp. z o.o. reserves the right to change the constructional features and finishes of products.  
| Nowy Styl sp. z o.o. zastrzega sobie prawo do zmian konstrukcyjnych produktów oraz zmian wykończeń.  
| Die Nowy Styl sp. z o.o. behält sich das Recht vor, technische Änderungen und Anpassungen der Stoff- und Oberflächenauswahl vorzunehmen.  
| Nowy Styl sp. z o.o. se réserve le droit de modifier les caractéristiques de construction et les finitions de ses produits.

Note: Colours and patterns illustrated here may vary from the originals.  
| Uwaga: Prezentowane kolory wykończeń mogą różnić się od oryginałów.  
| Wichtiger Hinweis: Die im Druck dargestellten Farben können von den Originalfarben abweichen.  
| Attention : Les coloris réels peuvent légèrement différer des coloris présents dans ce document.

Publications of Nowy Styl sp. z o.o.  
Brands and trademarks used herein are the property of NSG TM sp. z o.o.

